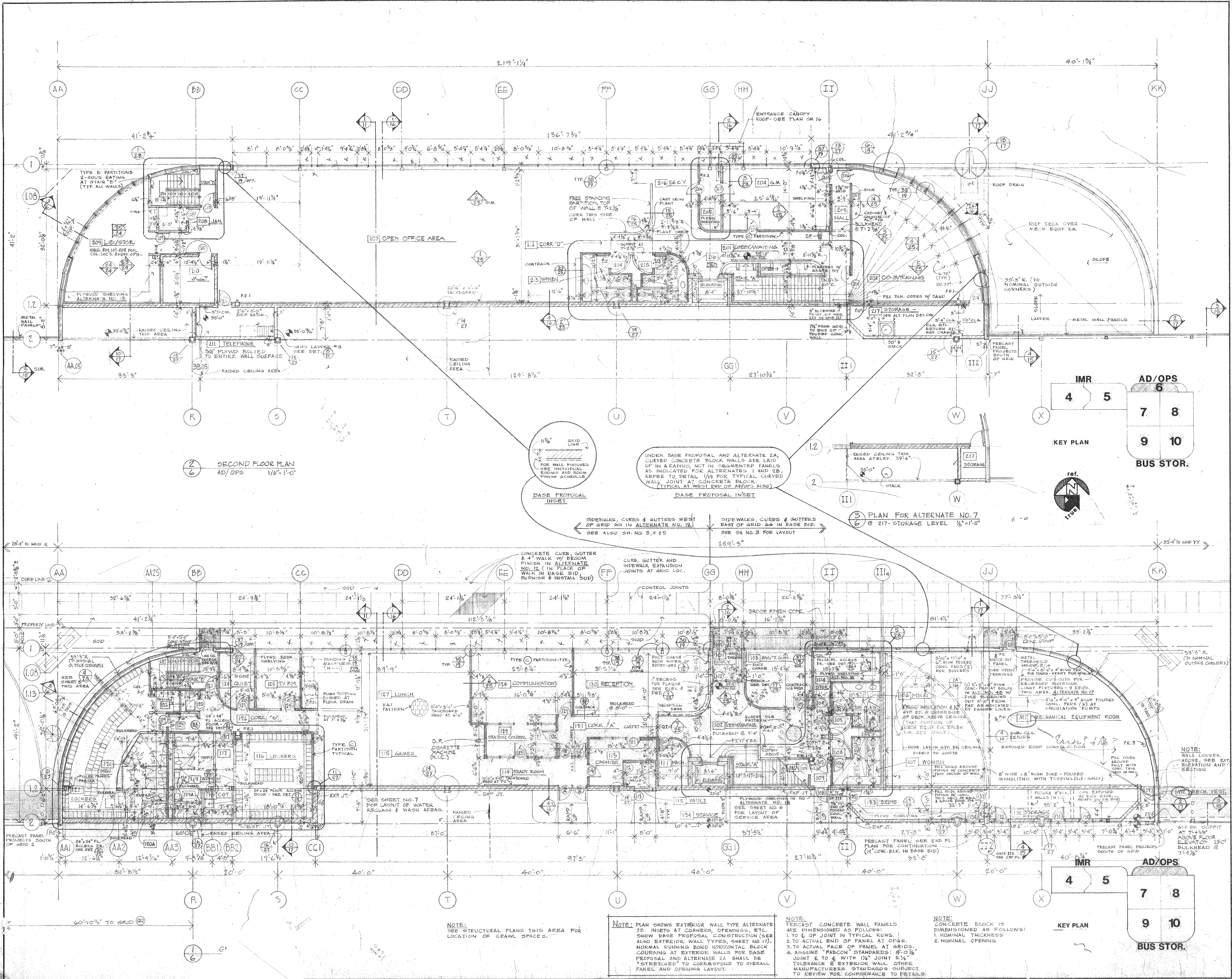


1. I hereby certify that this plan, specification and contract documents were prepared by me or under my direct supervision and that I am a duly registered Professional Engineer in the State of Minnesota.
John Veitch, P.E.
Date: 2/17/80, No. 12234

DTA OPERATING CENTER
PHASE 3 CONSTRUCTION
PROJECT NO. MN-03-0018
DULUTH MINNESOTA

John Veitch/Thomas & Veitch, Inc. 1518 East Superior Street, Duluth, Minnesota 55812 (218) 724-8802

GROUND AND SECOND FLOOR PLANS - AD/OPS



2 SECOND FLOOR PLAN
AD/OPS 1/8" = 1'-0"

2 PLAN FOR ALTERNATE NO. 7
@ 217-STORAGE LEVEL 1/8" = 1'-0"

BASE PROPOSAL INSET
UNDER BASE PROPOSAL AND ALTERNATE 2A, CURVED CONCRETE BLOCK WALLS ARE LAID UP IN A RADIUS, NOT IN SEGMENTED PANELS AS INDICATED FOR ALTERNATES 1 AND 2B. REFER TO DETAIL 1/8 FOR TYPICAL CURVED WALL JOINT AT CONCRETE BLOCK. (TYPICAL AT WEST END OF AD/OPS ALSO)

SIDEWALKS, CURBS & GUTTERS WEST OF GRID 66 IN ALTERNATE NO. 12. SEE ALSO SH. NO. 3, 4 & 5

SIDEWALKS, CURBS & GUTTERS EAST OF GRID 66 IN BASE BID. SEE SH. NO. 3 FOR LAYOUT

NOTE: SEE STRUCTURAL PLANS THIS AREA FOR LOCATION OF CRAWL SPACES.

NOTE: PLAN SHOWS EXTERIOR WALL TYPE ALTERNATE 2A. INSETS AT CORNERS, OPENINGS, ETC. SHOW BASE PROPOSAL CONSTRUCTION (SEE ALSO EXTERIOR WALL TYPES, SHEET NO. 17). NORMAL RUNNING BOND HORIZONTAL BLOCK COURSE AT EXTERIOR WALLS FOR BASE PROPOSAL AND ALTERNATE 2A SHALL BE "STRETCHED" TO CORRESPOND TO OVERALL PANEL AND OPENING LAYOUT.

NOTE: PRECAST CONCRETE WALL PANELS ARE DIMENSIONED AS FOLLOWS:
1. TO & OF JOINT IN TYPICAL RUNS.
2. TO ACTUAL END OF PANEL AT OPENING.
3. TO ACTUAL FACE OF PANEL AT GRID'S CORNER.
4. ASSUME "FABCON" STANDARDS: 8'-0" JOINT & TO & WITH 1/4" JOINT 2 1/4" TOLERANCE & EXTERIOR WALL OTHER MANUFACTURERS' STANDARDS SUBJECT TO REVIEW FOR CONFORMANCE TO DETAILS.

NOTE: CONCRETE BLOCK IS DIMENSIONED AS FOLLOWS:
1. NOMINAL THICKNESS
2. NOMINAL OPENING

KEY PLAN

BUS STOR.