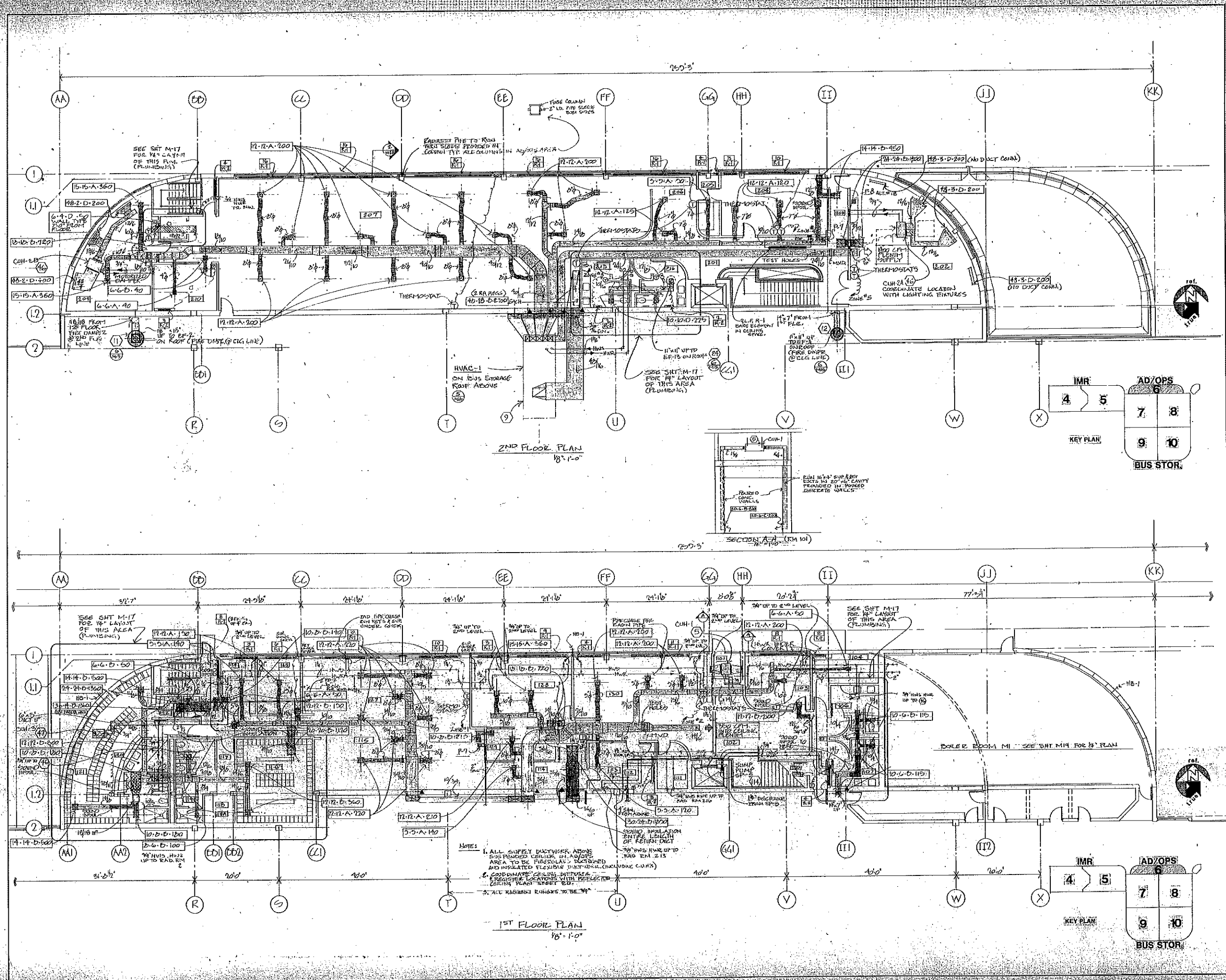


1. Verify existing conditions, including but not limited to, existing conditions, before construction. 2. Verify existing conditions, including but not limited to, existing conditions, before construction. 3. Verify existing conditions, including but not limited to, existing conditions, before construction.

DTA OPERATING CENTER
PHASE 3 CONSTRUCTION
PROJECT NO. MN-03-0018
DULUTH MINNESOTA

John Veitch/Thomas A. Veitch, Inc. 518 East Superior Street, Duluth, Minnesota 55812 (218) 724-8802

AD/OPS - PLUMBING, HEATING, VENTILATION



NOTES:
1. ALL SUPPLY DUCTWORK ABOVE BUS STORAGE LEVEL IN AD/OPS AREA TO BE FIBERGLASS DUCTWORK AND INSULATED FLEXIBLE DUCTWORK (INCLUDING CURVES).
2. COORDINATE CURVES, BENDS, ELBOWS, REGISTER LOCATIONS WITH REGISTER LAYOUT PLAN SHEET 20.
3. ALL EXISTING UNITS TO BE 1/2"