

Outside Air

68.8 deg F

Duluth Transit Authority Operating Center



ROOF-TOP UNIT 1

Supply Fan

Return Fan

Dis charge Air

ENERGY RECOVERY UNIT 1

Supply Fan

Return Fan

Dis charge Air

ENERGY RECOVERY UNIT 2

Supply Fan

Return Fan

Dis charge Air

ENERGY RECOVERY UNIT 3

Supply Fan

Return Fan

Dis charge Air

HEATING WATER SYSTEM

PUMP-1 PUMP-2 PUMP-3

BOILER 1 BOILER 2 BOILER 3

LW LW LW

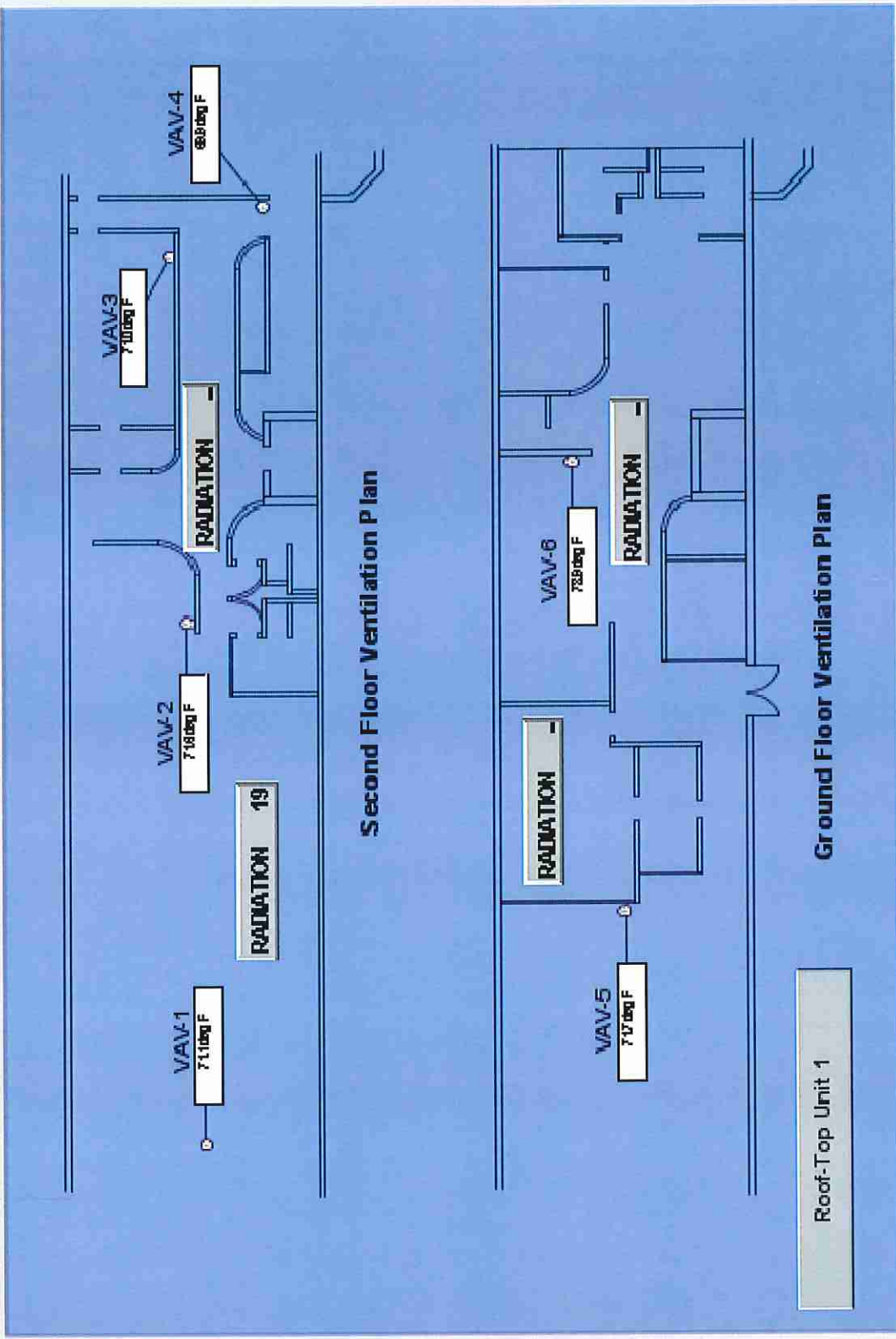
ALARM ALARM ALARM

Supply Water Temperature

Return Water Temperature

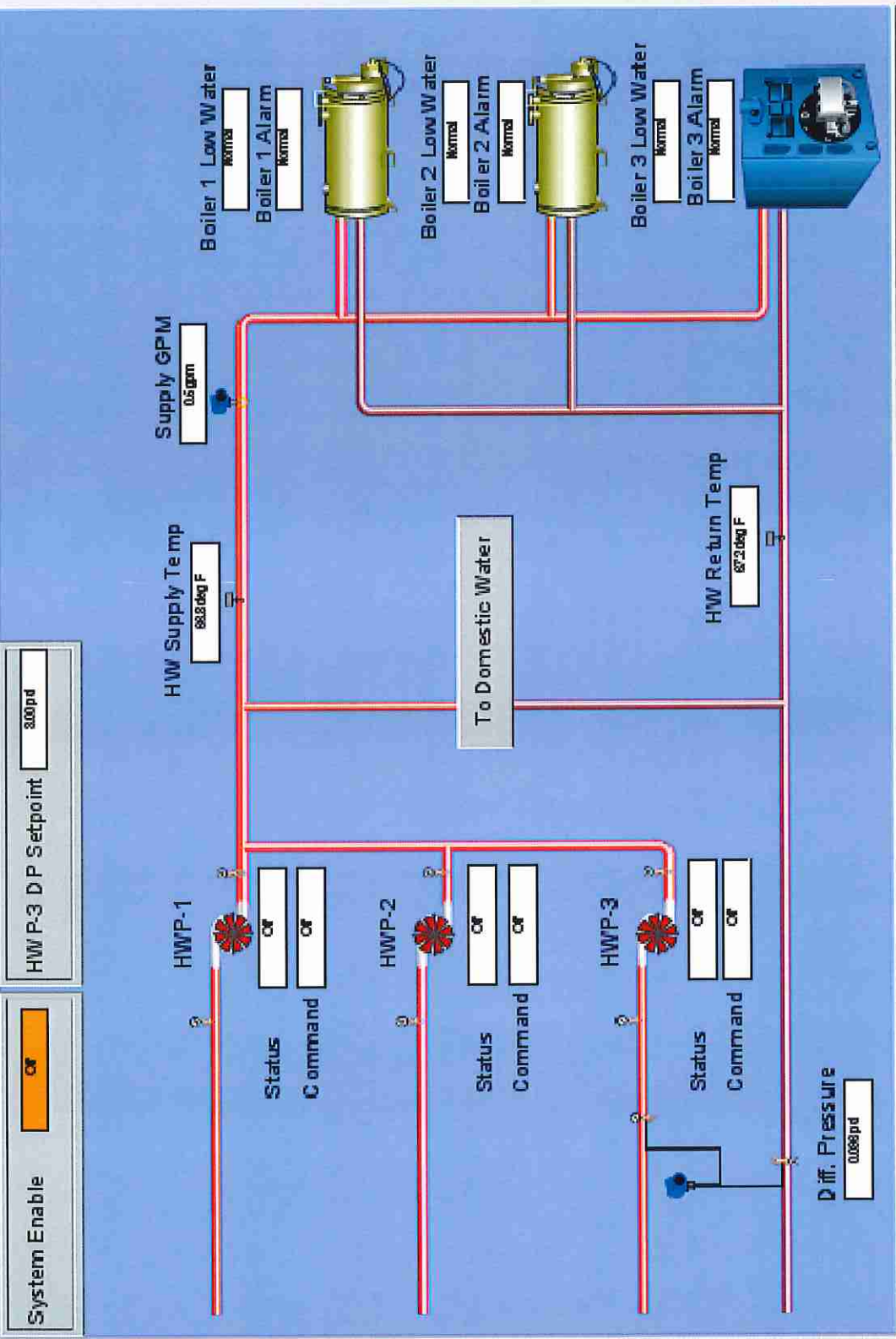
ROOM CONTROLS / FLOORPLAN

MAIN



Hot Water System

Main



Mall

Roof-Top Unit 1



Occupancy

Occupied
65.0 deg F
75.0 deg F
85.0 deg F

Unc Heating Setpoint

65.0 deg F

Unc Cooling Setpoint

75.0 deg F

Economizer Setpoint

85.0 deg F

Cooling Lockout Setpoint

65.0 deg F

Minimum O.A Position

00%

Unc Disch Htg Setpoint

80.0 deg F

Unc Disch Clg Setpoint

75.0 deg F

Operating Schedule



Outside Air Temp

61.1 deg F

Ret Air Humidity

32.1%RH

Fire Alarm Status

Normal

Mixed Air Damper

Offboard

Mixed Air Temp

78.3 deg F

Command

Speed 0%

Alarm Normal

Calculated Setpoint

83.1 deg F

Disch Air Temp

74.0 deg F

Temp Low Limit

Normal

Heating Valve

00%

Stage 1

Off

Stage 2

Off

Cooling Output

00%

Supply Air Pressure

0.880 InWg

High Pressure Alarm

Normal

Command

On

Speed

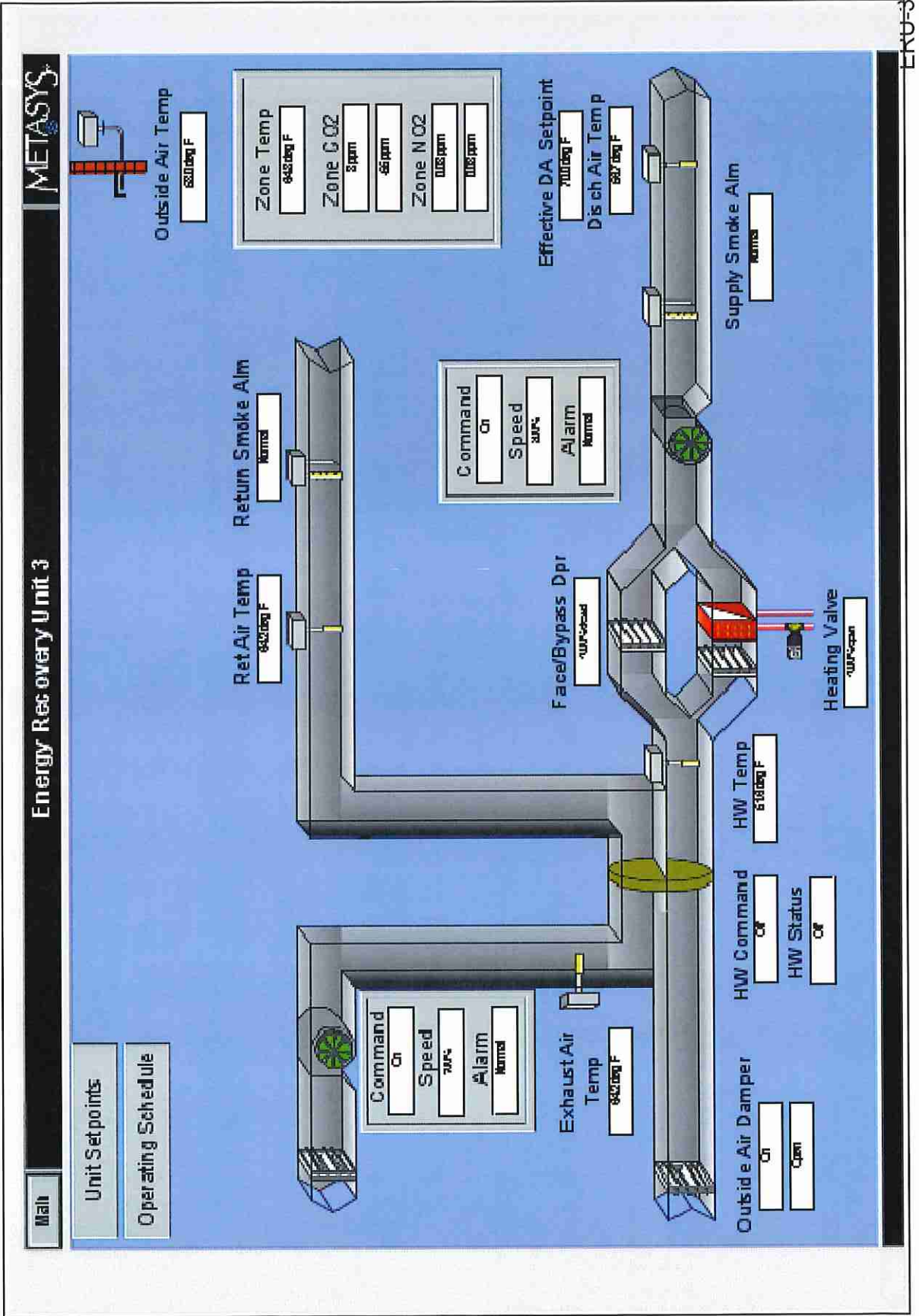
00%

Alarm

Normal

KTU-1

EXAMPLE



Summary

Status	Item	Value	Description
	OCC-SCHEDULE	Occupied	Occupancy Schedule
	ZNT	71.7 deg F	Zone Temperature
	ZNT-SP	71.0 deg F	Common Setpoint
	EFFCLG-SP	72.0 deg F	Effective Cooling Setpoint
	EFFHTG-SP	70.0 deg F	Effective Heating Setpoint
	SF-C	On	Supply Fan Command
	OA-T	77.5 deg F	Outdoor Air Temperature
	CLG1-C	Off	Cooling Stage 1 Command
	CLG2-C	Off	Cooling Stage 2 Command
	HTG1-C	Off	Heating Stage 1 Command
	HTG2-C	Off	Heating Stage 2 Command
	TUNING-RESET	False	Application Tuning Reset
	CLGOCC-SP	71.0 deg F	Occupied Cooling Setpoint
	HTGOCC-SP	69.0 deg F	Occupied Heating Setpoint
	CLGUNOCC-SP	82.0 deg F	Unoccupied Cooling Setpoint
	HTGUNOCC-SP	68.0 deg F	Unoccupied Heating Setpoint