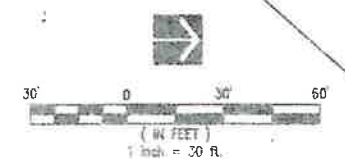


GENERAL NOTES:

1. PARKING LOT SHALL BE MECHANICALLY SWEEPED PRIOR TO OVERLAY OPERATIONS OR TIGHT BLADING.
2. ALL PARKING LOT STRIPING AND MARKINGS SHALL BE ALKYO OR CHLORINATED RUBBER PAINT.
3. CONTRACTOR RESPONSIBLE FOR EROSION CONTROL PROVIDE INLET PROTECTION FOR SLOT DRAIN. USE SAND BAGS & GEOTEXTILE FABRIC TO PREVENT SEDIMENT ENTERING DRAIN OR EQUIVALENT.
4. CONTRACTOR TO FILL ALL DEPRESSIONS (POTHoles & LINEAR CRACKS WITH SETTLEMENT) WITH BITUMINOUS CONCRETE. TACK COAT ALL AREAS PRIOR TO FILLING. INCLUDE 30 TONS OF BITUMINOUS CONCRETE FOR FILLING OPERATIONS. THIS QUANTITY EXCLUDES PAVEMENT REPAIR & BITUMINOUS PATCH AREAS NOTED ON PLAN.
5. NEAT LINE FULL DEPTH SAW CUTTING SHALL BE PERFORMED PRIOR TO ANY PAVEMENT REMOVAL.
6. BITUMINOUS CONCRETE OVERLAY TO COVER CONCRETE GUTTER. EXCEPT IN TRANSITION ZONES AND COMPLETE REPLACEMENT AREAS.
7. CONTRACTOR IS RESPONSIBLE FOR ALL TRAFFIC CONTROL.
8. CONTRACTOR TO COORDINATE TIMING OF WORK WITH OWNER. CONTRACTOR TO GIVE ADVANCE NOTICE OF WORK TO ALLOW OWNER TO VACATE PARKING LOT.
9. PARKING LOT SHALL BE RE-STRIPED WITHIN 2 DAYS OF BITUMINOUS CONCRETE OVERLAY.



- LEGEND
- [Symbol] COMPLETE REPLACEMENT OF BITUMINOUS CONCRETE PAVEMENT
  - [Symbol] BITUMINOUS CONCRETE OVERLAY
  - [Symbol] BITUMINOUS CONCRETE
  - [Symbol] TRANSITION ZONE: SEE SECTION

TEL 218-727-4444  
FAX 218-727-4444  
http://www.lhbcorp.com  
DULUTH MINNEAPOLIS

CLIENT:  
**DULUTH TRANSIT AUTHORITY**

2402 W MICHIGAN ST  
DULUTH MN 55806

THIS SQUARE APPEARS 1/2" x 1/2" ON FULL SIZE SHEETS.

NO	DATE	REVISION
1	5-1-2009	80% SCHEMATIC DESIGN

I HEREBY CERTIFY that this plan, specification or report was prepared by me or under my direct supervision and that I am a duly Licensed Professional Engineer under the laws of the State of Minnesota.

SIGNATURE: *[Signature]*  
TYPED OR PRINTED NAME: THOMAS A. JOHNSON  
DATE: 5-1-2009 REG. NO: 46744

COPYRIGHT 2009 BY LHB, INC. ALL RIGHTS RESERVED.

PROJECT NAME:  
**ARRA BUS FACILITY PAVING**  
2009

DRAWING TITLE:  
**PARKING LOT REHABILITATION PLAN SHEET**

FILE: \\0901\BREV\2009\60216\C100.dwg  
DRAWN BY: BMS  
CHECKED BY: TAJ  
PROJ NO: 88596  
DRAWING NO:

**C100**



EXISTING PARKINGS = 99  
PROPOSED PARKING = 110  
w/- 2000 SF IMPERVIOUS

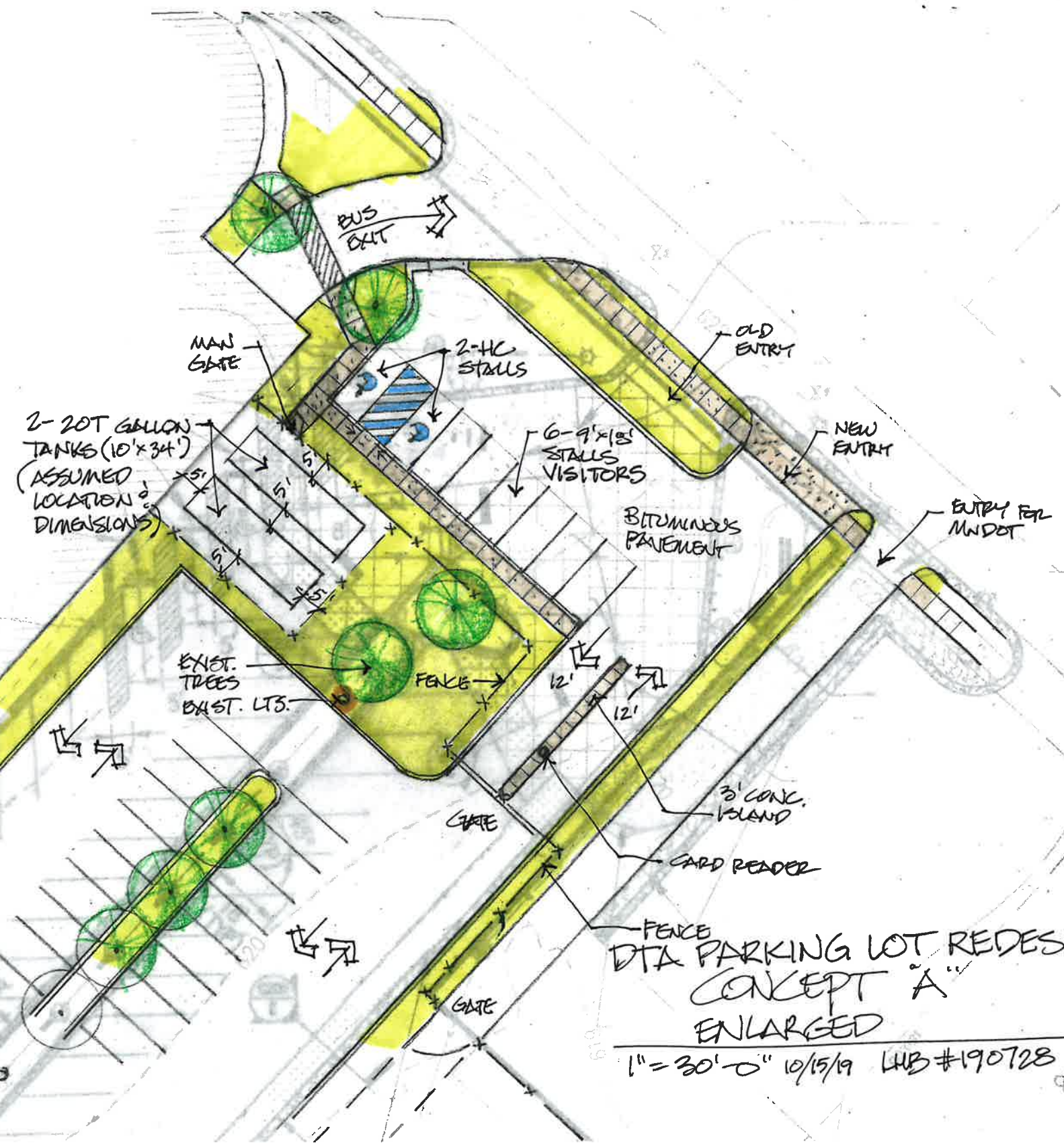
1" = 30'-0" 10/15/19 LHB# 190728

DEDA CERTIFICATE 304439

POB TRACT LBR1 304439 EXC



TRANSIT AUTHORITY  
ST MICHIGAN STREET  
DTA CERTIFICATE # 190728



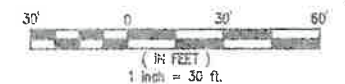
FENCE  
DTA PARKING LOT REDESIGN  
CONCEPT "A"  
ENLARGED  
1" = 30'-0" 10/15/19 LUB #190728

S P



**GENERAL NOTES:**

1. PARKING LOT SHALL BE MECHANICALLY SWEEPED PRIOR TO OVERLAY OPERATIONS OR TIGHT BLADING.
2. ALL PARKING LOT STRIPING AND MARKINGS SHALL BE ALKYD OR CHLORINATED RUBBER PAINT.
3. CONTRACTOR RESPONSIBLE FOR EROSION CONTROL. PROVIDE INLET PROTECTION FOR SLOT DRAIN. USE SAND BAGS & GEOTEXTILE FABRIC TO PREVENT SEDIMENT ENTERING DRAIN OR EQUIVALENT.
4. CONTRACTOR TO FILL ALL DEPRESSIONS (POTHOLES & LINEAR CRACKS WITH SETTLEMENT) WITH BITUMINOUS CONCRETE. TACK COAT ALL AREAS PRIOR TO FILLING. INCLUDE 30 TONS OF BITUMINOUS CONCRETE FOR FILLING OPERATIONS. THIS QUANTITY EXCLUDES PAVEMENT REPAIR & BITUMINOUS PATCH AREAS NOTED ON PLAN.
5. NEAT LINE FULL DEPTH SAW CUTTING SHALL BE PERFORMED PRIOR TO ANY PAVEMENT REMOVAL.
6. BITUMINOUS CONCRETE OVERLAY TO COVER CONCRETE GUTTER, EXCEPT IN TRANSITION ZONES AND COMPLETE REPLACEMENT AREAS.
7. CONTRACTOR IS RESPONSIBLE FOR ALL TRAFFIC CONTROL.
8. CONTRACTOR TO COORDINATE TIMING OF WORK WITH OWNER. CONTRACTOR TO GIVE ADVANCE NOTICE OF WORK TO ALLOW OWNER TO VACATE PARKING LOT.
9. PARKING LOT SHALL BE RE-STRIPED WITHIN 2 DAYS OF BITUMINOUS CONCRETE OVERLAY.



- LEGEND**
- [Hatched Box] COMPLETE REPLACEMENT OF BITUMINOUS CONCRETE PAVEMENT
  - [Dotted Box] BITUMINOUS CONCRETE OVERLAY
  - [Solid Yellow Box] BITUMINOUS CONCRETE
  - [Hatched Box] TRANSITION ZONE: SEE SECTION



EXISTING PARKING = 99  
 PROPOSED PARKING = 124  
 PROPOSED W/ALT. = 107  
 1720 SF LESS IMPERVIOUS  
 3900 SF LESS W/ALT.

1"=30'-0" 10/15/19 LHB#190728

CLIENT:  
**DULUTH TRANSIT AUTHORITY**  
 2402 W MICHIGAN ST  
 DULUTH MN 55808

THIS SQUARE APPEARS 1/2" x 1/2" ON FULL SIZE SHEETS.

NO	DATE	REVISION
1	5-1-2009	80% SCHEMATIC DESIGN

I HEREBY CERTIFY that this plan, specification or report was prepared by me or under my direct supervision and that I am a duly licensed Professional Engineer under the laws of the State of Minnesota.

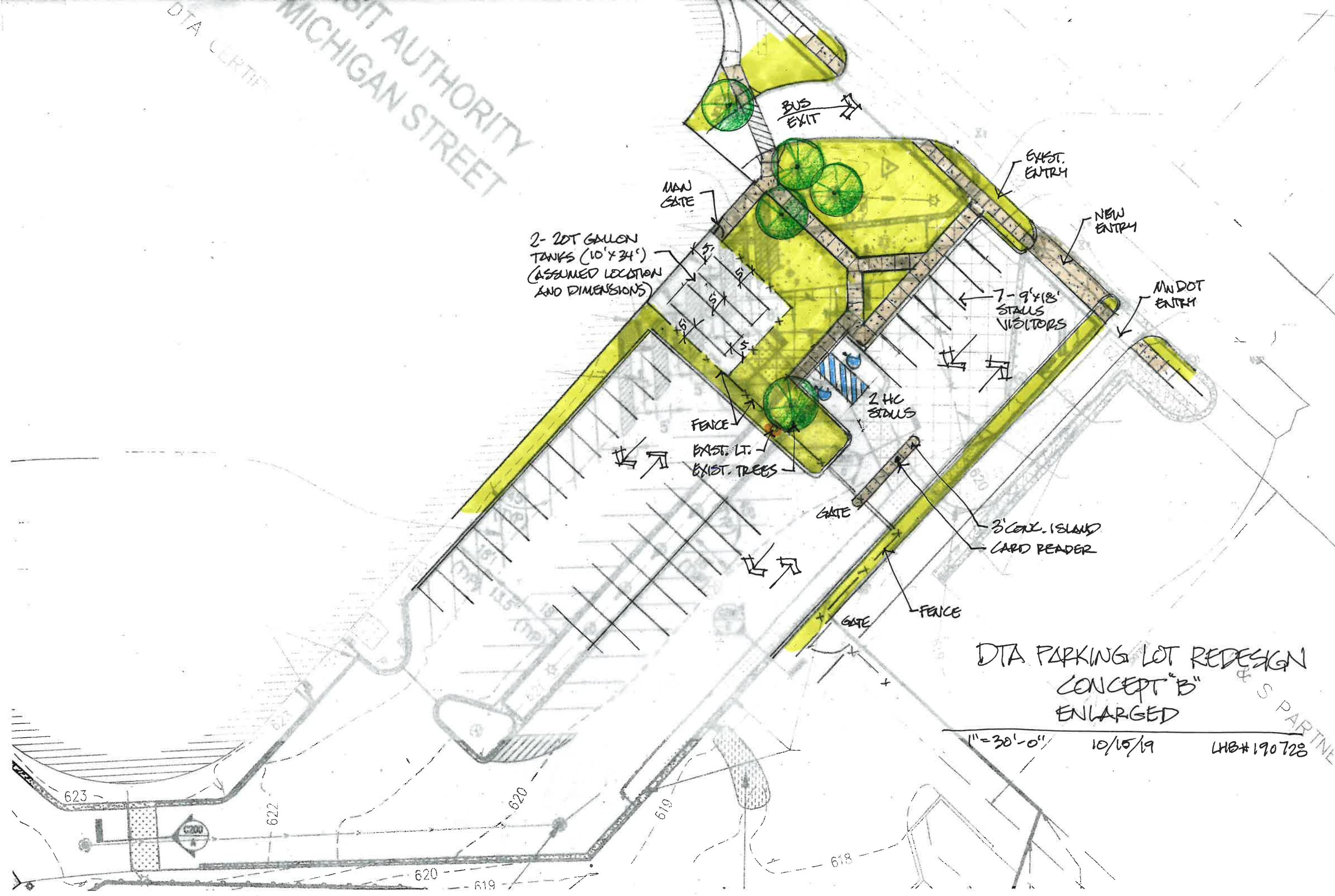
SIGNATURE: *[Signature]*  
 TYPED OR PRINTED NAME: THOMAS A. JOHNSON  
 DATE: 5-1-2009 REG. NO: 46744

PROJECT NAME:  
**ARRA BUS FACILITY PAVING 2009**

DRAWING TITLE:  
**PARKING LOT REHABILITATION PLAN SHEET**



DTA CERTIFIED  
MICHIGAN STREET



2- 20T GALLON  
TANKS (10' x 34')  
(ASSUMED LOCATION  
AND DIMENSIONS)

MAN  
GATE

BUS  
EXIT

EXIST.  
ENTRY

NEW  
ENTRY

MWDOT  
ENTRY

7- 9' x 18'  
STALLS  
VISITORS

2 HC  
STALLS

FENCE

EXIST. LT.  
EXIST. TREES

GATE

3' CON. ISLAND  
CARD READER

FENCE

GATE

DTA PARKING LOT REDESIGN  
CONCEPT "B"  
ENLARGED

1" = 30'-0"

10/15/19

LHB# 190728

S PARTNER