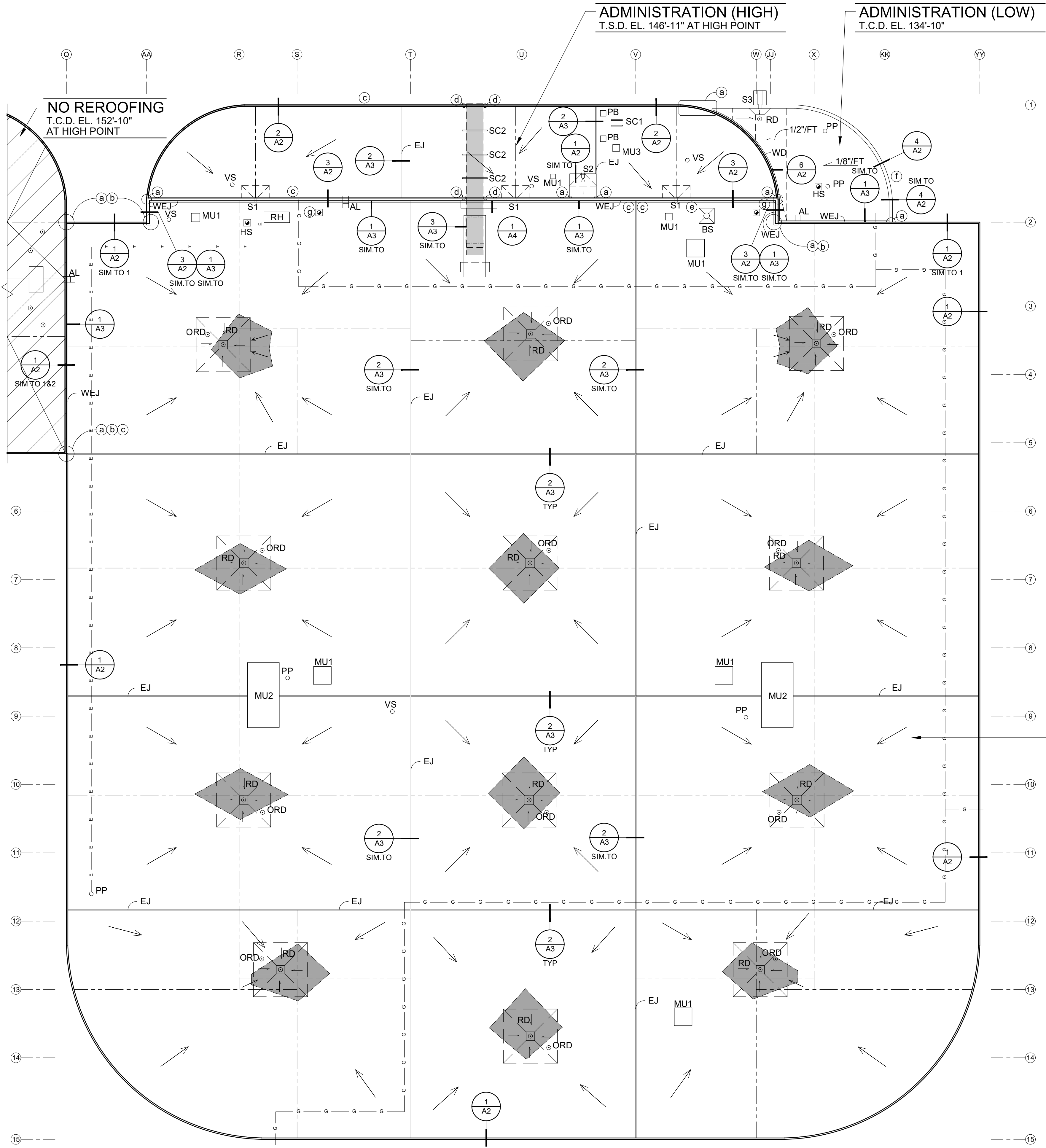


3/22/2019 12:05 PM RYAN MCCLINN
\\HUL\Kroofing\Drawing Files\Public\Cities\City of Duluth\Duluth Transit Authority\2019 DTA Operations Center\5.0-Inspect\0-Current - use this one instead\214706 Plan.dwg



T1

3/22/2019 12:07 PIRYAN MCLINN \\HUL\kroding\Drawing Files\Public\Cities\Cly of Duluth\2019 DTA Operations Center\5.0\inspec\0-Current - use this one instead\1214706 Plan.dwg



ROOF PLAN NOTATIONS

- (a) AT PARAPET INTERSECTION TO PARAPET OR WALL PROVIDE A ONE-PIECE FULLY SOLDERED SHEET METAL CLOSURE FLASHING
- (b) NEATLY CUT OUT PORTION OF EIFS AND PROVIDE SHEET METAL RECEIVER FLASHING. (SEE DETAIL 1/A6.)
- (c) EXISTING WALL-MOUNTED ANTENNAE AND/OR COMMUNICATION CABLE. REMOVE AND REINSTALL AS NECESSARY TO PROVIDE NEW MATERIALS. MODIFY OR REPLACE MOUNTING BRACKETS. COORDINATE DOWNTIME AND/OR TEMPORARY CONNECTIONS WITH OWNER.
- (d) REMOVE EXISTING BRACKETS AND PROVIDE NEW BRACKETS CUSTOM 12 GA. G.S. TO SUPPORT EXISTING DUCTWORK AT VERTICAL SURFACE ON PARAPET DETAIL WITH LAG SCREWS THROUGH EPDM PAD.
- (e) EXISTING WALL-MOUNTED BRACE AND/OR BRACKET. REMOVE AND REINSTALL AS NECESSARY TO PROVIDE NEW MATERIALS. PROVIDE TEMPORARY SUPPORTS AND MODIFY AS REQUIRED.
- (f) MODIFY WALL-MOUNTED PIPING TO ACCOMMODATE NEW MATERIALS.
- (g) REMOVE OBSOLETE ITEM AND SUPPORTS AND COVER HOLE IN DECK. FOR HOLES LESS THAN 13", COVER OPENING WITH 12 GA. G.S. PLATE LAPPED MINIMUM 6" ONTO DECK FASTENED 6" O.C..
- AL EXISTING ACCESS LADDER, PROVIDE DOUBLE FLOOD COAT AND EXTRA GRAVEL WITHIN 3'-0" OF LADDER LOCATION. REMOVE LADDER AND DELIVER TO OWNER FOR MODIFICATION/ REINSTALLATION.
- HS/BS NEW HEAT/ BOILER STACK CURB AT EXISTING STACK (SEE DETAIL 6/A3)
- 1/2"/FT. TAPERED INSULATION SUMP
1/8"/FT. TAPERED INSULATION
- MU1 EXISTING MECHANICAL UNIT CURB. PROVIDE 1/2"/FT. TAPERED ISOCYANURATE INSULATION CRICKETS AT HIGH SIDE OF ALL CURBS (SEE DETAIL 3/A3)
- MU2 EXISTING MECHANICAL UNIT CURB. PROVIDE 1/2"/FT. TAPERED ISOCYANURATE INSULATION CRICKETS AT HIGH SIDE OF ALL CURBS (SEE DETAIL 5/A3)
- MU3 NEW MECHANICAL CURB FOR EXISTING MECHANICAL EQUIPMENT (SEE DETAIL 4/A3)
- PP EXISTING PIPE PENETRATION TO REMAIN (SEE DETAIL 5/A5)
- PB NEW PIPE BOX ENCLOSURE AT NEW OR EXISTING LOCATION. CONSOLIDATE NEAR BY MECHANICAL AND ELECTRICAL THROUGH PIPE BOX ENCLOSURE (SEE DETAIL 6/A4)
- RH ROOF HATCH. PROVIDE DOUBLE FLOOD COAT AND EXTRA GRAVEL WITHIN 3'-0" (SEE DETAIL 6/A4)

- RD EXISTING ROOF DRAIN AT EXISTING LOCATION (SEE DETAIL 3/A5)
- ORD EXISTING OVERFLOW ROOF DRAIN AT EXISTING LOCATION (SEE DETAIL 3/A5)
- SC1 EXISTING SLEEPER CURB (SEE DETAIL 7/A4)
- SC2 NEW SLEEPER CURB AT EXISTING SUPPORT LEGS FOR DUCTWORK (SEE DETAIL 7/A4)
- S1 NEW PRIMARY THROUGH-PARAPET SCUPPER WITH DOWNSPOUT AND SHEET METAL SPLASH PAN AT EXISTING LOCATION. (SEE DETAIL 1/A5 & 6/A5)
- S2 NEW PRIMARY FREE-FALL SCUPPER AT NEW LOCATION. (SEE DETAIL 2/A5)
- S3 EXISTING MONOLITHIC CONCRETE SCUPPER. LINE ENTIRE TROUGH WITH UNCURED NEOPRENE AND SHEET METAL. PROVIDE SHEET METAL CAP FLASHING AND ONE-PIECE SHEET METAL CLOSURES AT END OF TROUGH AND AT INTERSECTION WITH EIFS WITH CONTINUOUS SEALANT COMPRESSED WITH FASTENERS AT 8" O.C. (PROVIDE SHOP DRAWINGS)
- STRUCTURAL SLOPE (SLOPES VARY)
- VS EXISTING VENT STACK (SEE DETAIL 4/A5)
- EJ/WEJ EXPANSION JOINT (EJ) WALL EXPANSION JOINT (WEJ). AT ROOF EDGE OR EXPANSION JOINT INTERSECTION, CONTINUE WOOD BLOCKING FULL HEIGHT AND PROVIDE TWO-PIECE SHEET METAL EXPANSION TYPE END ENCLOSURE
- WD EXISTING WINDOW AT ROOF/WALL CONDITION (SEE DETAIL 5/A2)
- CHANGE IN PLANE
- ELECTRICAL CONDUIT. MODIFY AS REQUIRED FOR NEW MATERIALS AND SUPPORT WITH PRE-MANUFACTURED PIPE SUPPORTS. (SEE PROJECT MANUAL)
- GAS PIPING. MODIFY AS REQUIRED FOR NEW MATERIALS AND SUPPORT WITH PRE-MANUFACTURED PIPE SUPPORTS. (SEE PROJECT MANUAL) OWNER SHALL MAKE CONNECTIONS AT LOCATIONS THAT ARE CURRENTLY DISCONNECTED AND HANDLE TESTING AND FILLING GAS PIPING AFTER ROOFING IS COMPLETED
- PROVIDE TAPERED INSULATION AS REQUIRED AT LOW POINTS OF STRUCTURAL SLOPE TO PROVIDE POSITIVE DRAINAGE (SEE DETAIL 3/A5)
- DUCTWORK ABOVE ROOF (HEIGHT VARIES APPROX 2'-0" TO 6'-0") RAISE AS NECESSARY WHEN RAISING CURB ON BUS STORAGE

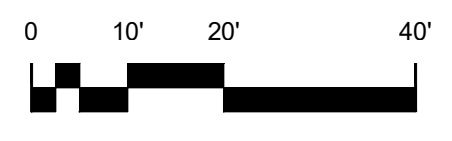
BUS STORAGE
T.S.D. EL. 142'-11"
AT HIGH POINT

ROOF PLAN
1" = 20'-0"

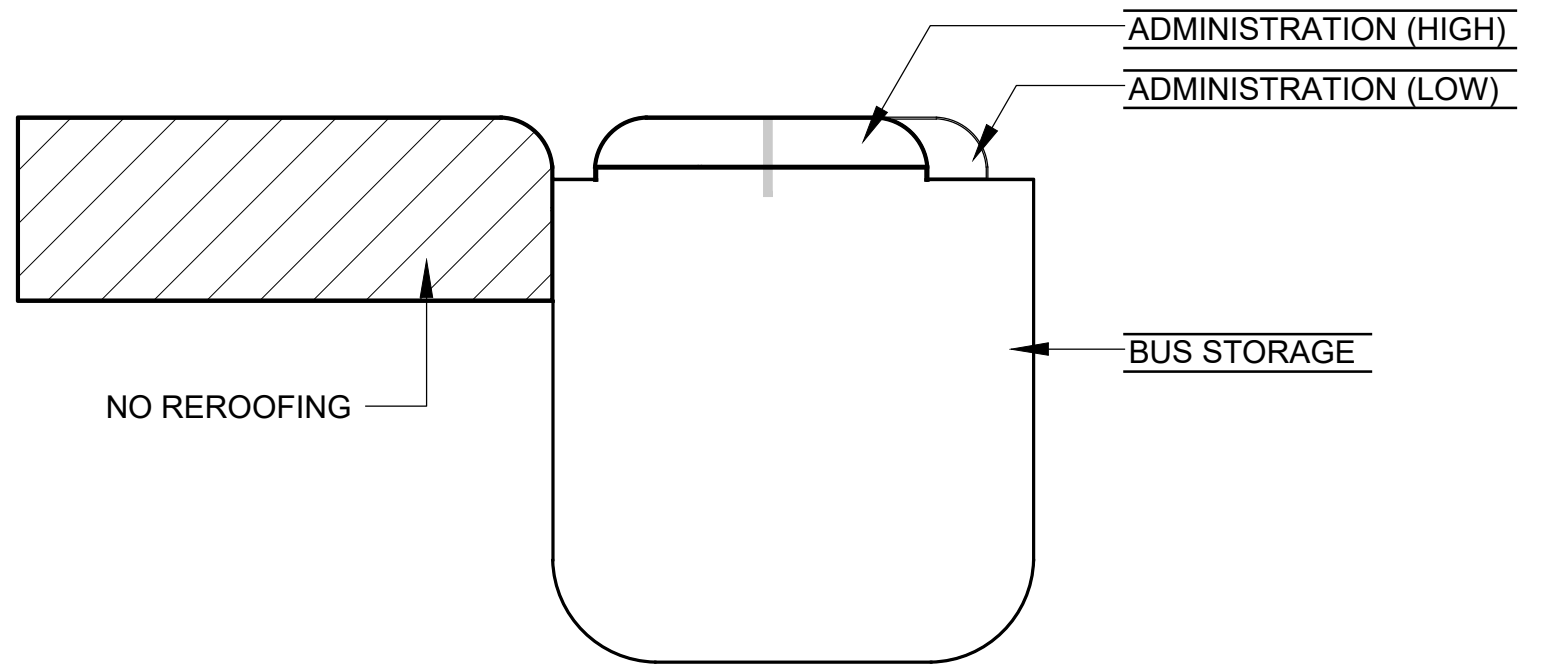
ADMINISTRATION/ BUS STORAGE



GRADE ELEVATION
100'-0" (ASSUMED)



KEY PLAN
NO SCALE





5801 Duluth Street
Minneapolis, MN
55422
Ph. 763-546-3434

© 2019

Consultants:

Issues and revisions.		
ISSUE LEVEL / REVISION:	DATE:	No.:
90% REVIEW	3/14/2019	
95% REVIEW	3/22/2019	

Client:

DULUTH TRANSIT
AUTHORITY

Project title:

2019 PARTIAL REROOFING
OPERATIONS CENTER

2402 W MICHIGAN ST.
DULUTH, MN 55806

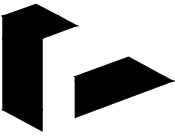
Sheet content:

- ROOF PLAN
- ROOF PLAN NOTATIONS
- KEY PLAN

DATE: 3/14/2019
CLIENT PROJECT No.:
INSPEC PROJECT No.: 214706.1
PROJECT MGR: DM
DRAWN BY: RJM
CHECKED BY: DM

Sheet No.:

A1



5801 Duluth Street
Minneapolis, MN
55422
Ph. 763-546-3434

© 2019

Consultants:

Signature:

Issues and revisions:

ISSUE LEVEL / REVISION:	DATE:	No.:
90% REVIEW	3/14/2019	
95% REVIEW	3/22/2019	

Client:

DULUTH TRANSIT AUTHORITY

Project title:

2019 PARTIAL REROOFING OPERATIONS CENTER

2402 W MICHIGAN ST.
DULUTH, MN 55806

Sheet content:

ROOFING DETAILS

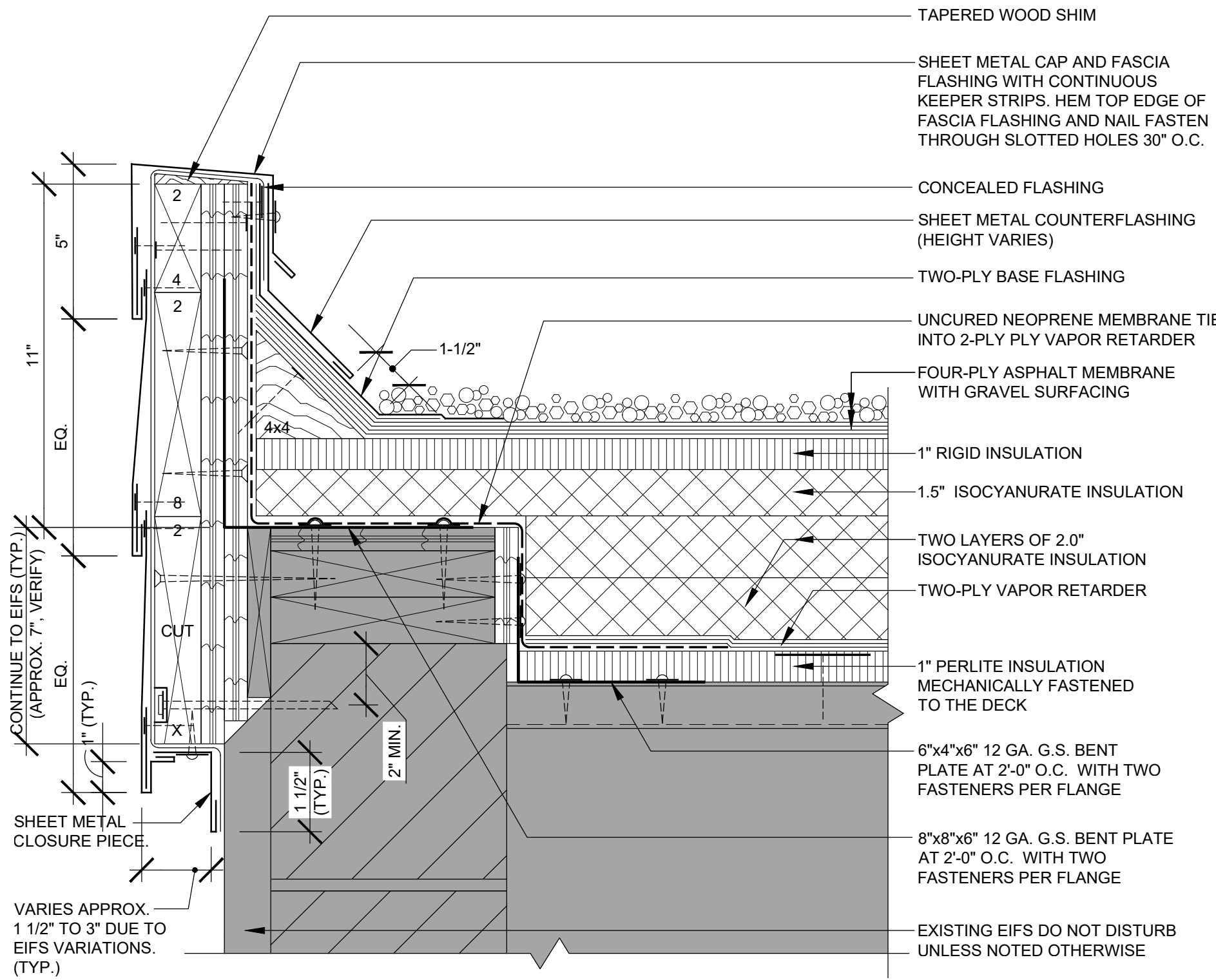
DATE: 3/14/2019
CLIENT PROJECT No.:
INSPEC PROJECT No.: 214706.1
PROJECT MGR: DM
DRAWN BY: RJM
CHECKED BY: DM

Sheet No.:

A2

NOTES:

- AT SIM.TO LOCATION EXISTING METAL PANELS WALL IN LIEU OF EIFS. PANELS SHALL BE REMOVE AND STORED. (SEE DETAIL 1/A3) CONTINUE CONCEALED FLASHING DOWN WALL ONTO TEMPORARY SELF ADHERING MEMBRANE TO MAINTAIN WEATHER TIGHT CONDITION. (VERIFY REMOVE WITH OWNER IF THERE IS NO LOW ROOF CONDITION).
- AT SIM.TO CONDITION, NO REROOFING. CUT AND PATCH ROOFING INSTALL AND PROVIDE 4-PLY GRAVEL-SURFACE BUR TIE-IN AS REQUIRED TO PROVIDE NEW MATERIALS.
- PROVIDE SHORT OR SEGMENTED WOOD BLOCKING AND SHEET METAL AT RADIUS CONDITION, KIRF PLYWOOD AS NEEDED

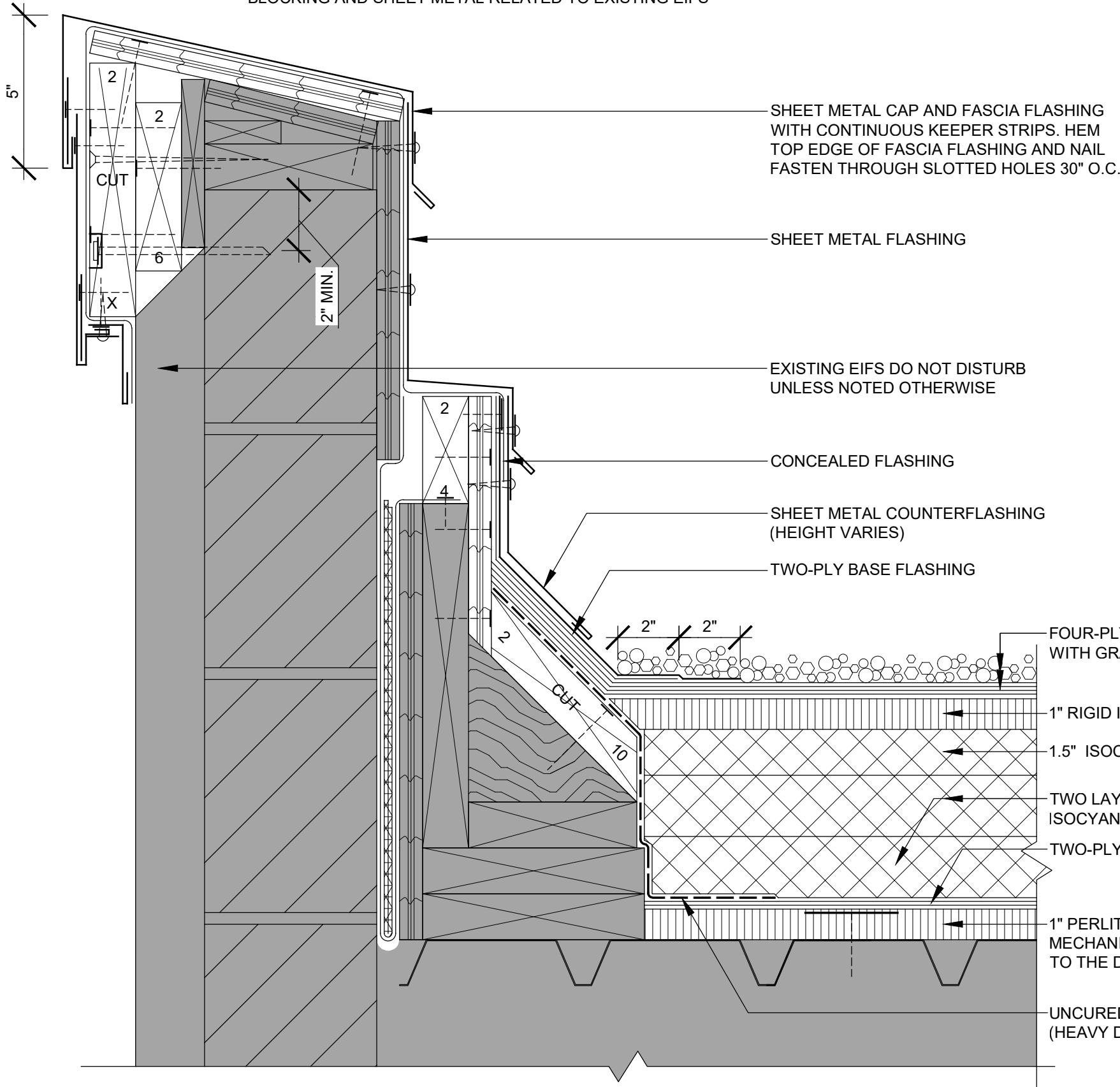


1 ROOF EDGE DETAIL

A2 3" = 1'-0" BUS STORAGE

NOTES:

- AT PARAPET INTERSECTION WITH PARAPET, PROVIDE ONE-PIECE SOLDERED SHEET METAL ENCLOSURE TO ACCOMMODATE IRREGULAR SLOPES OF CAP FLASHING
- PROVIDE SHORT OR SEGMENTED WOOD BLOCKING AND SHEET METAL AT RADIUS CONDITION, KIRF PLYWOOD AS NEEDED
- SEE DETAIL 1/A2 FOR TYPICAL NOTES REGARDING WOOD BLOCKING AND SHEET METAL RELATED TO EXISTING EIFS

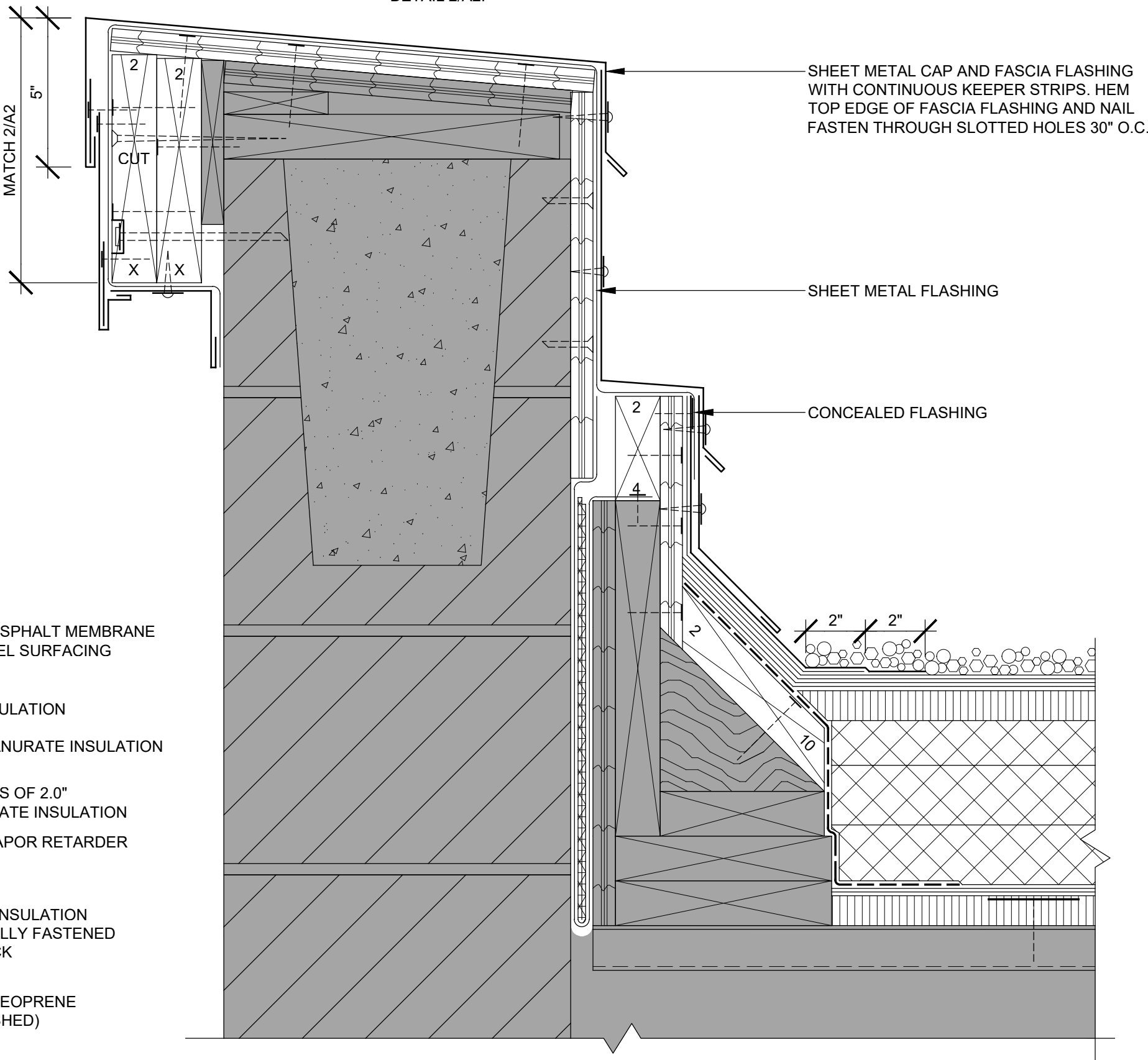


2 PARAPET DETAIL

A2 3" = 1'-0" ADMINISTRATION (HIGH)

NOTES:

- AT PARAPET INTERSECTION WITH PARAPET, PROVIDE ONE-PIECE SOLDERED SHEET METAL ENCLOSURE TO ACCOMMODATE IRREGULAR SLOPES OF CAP FLASHING
- AT SIM.TO CONDITION, EXISTING EIFS AT EXTERIOR WALL. ADD 2x BLOCKING TO MATCH DETAIL 2/A2.

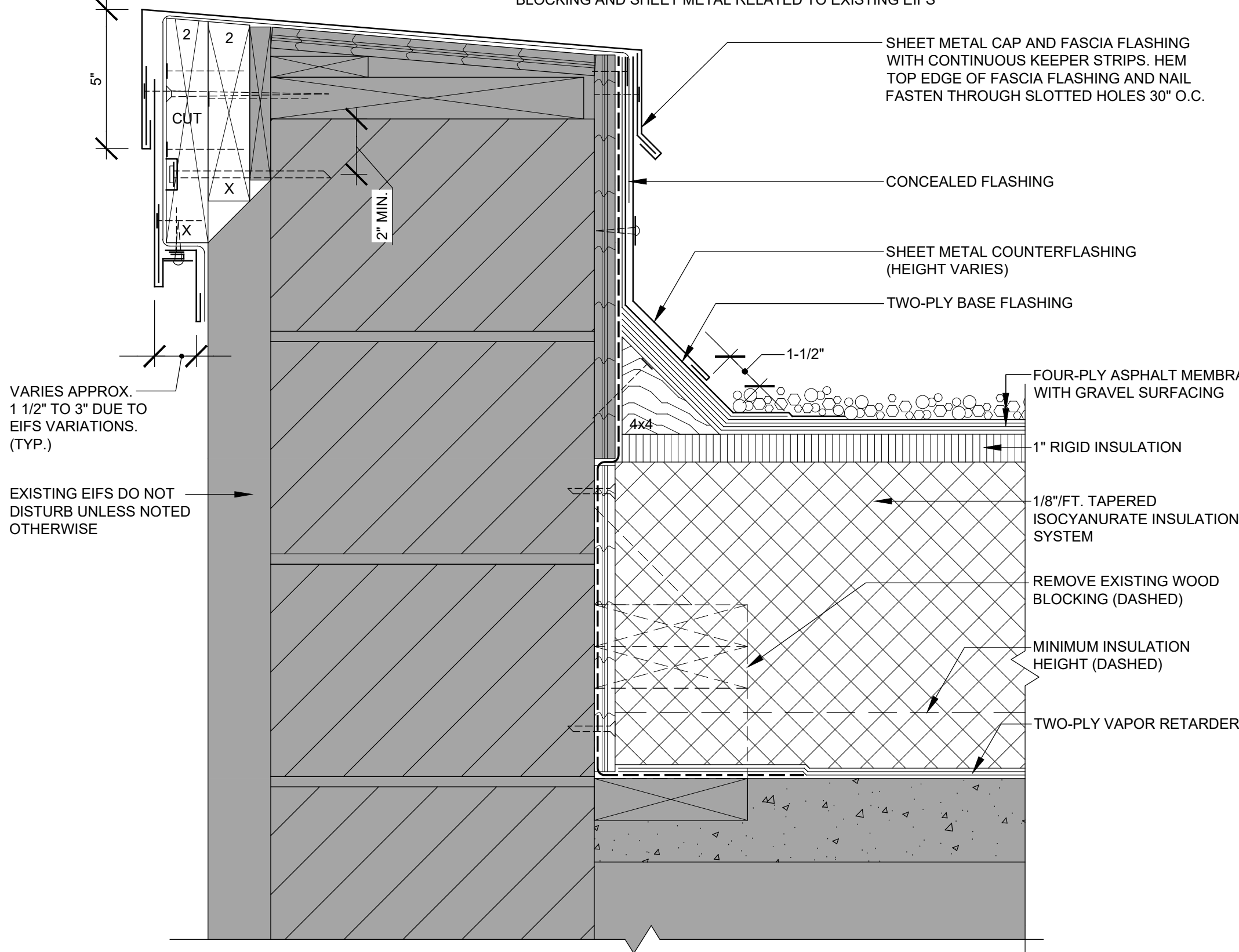


3 PARAPET DETAIL

A2 3" = 1'-0" ADMINISTRATION (HIGH)

NOTES:

- AT SIM.TO CONDITION, WALL LOUVER IN LIEU OF EIFS. MAINTAIN EXISTING PARAPET WIDTH AND EXTEND HORIZONTAL OF FASCIA FLASHING TO LOUVER IN LIEU OF SHEET METAL CLOSURE PIECE.
- PROVIDE SHORT OR SEGMENTED WOOD BLOCKING AND SHEET METAL AT RADIUS CONDITION
- SEE DETAIL 1/A2 FOR TYPICAL NOTES REGARDING WOOD BLOCKING AND SHEET METAL RELATED TO EXISTING EIFS

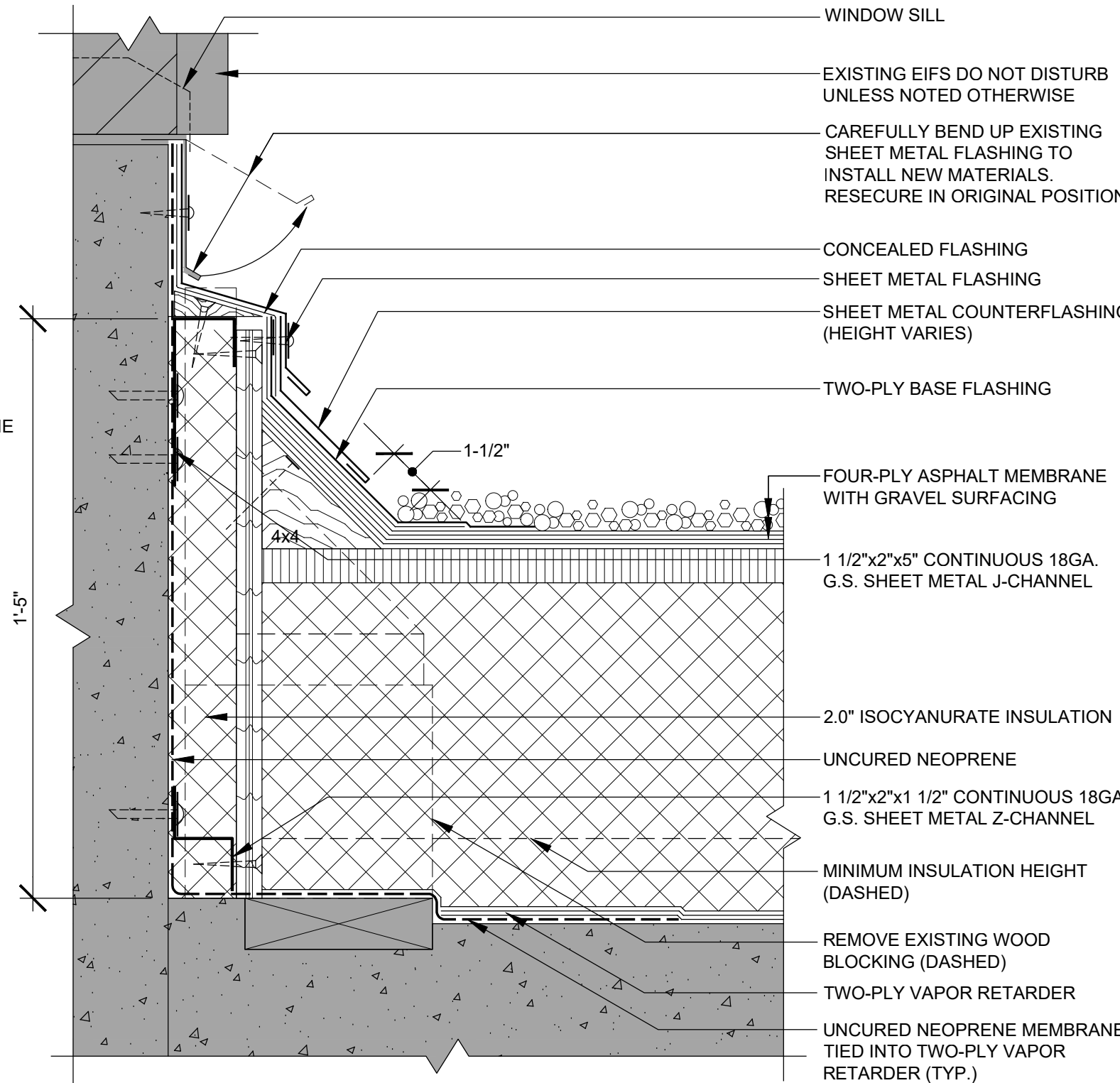


4 PARAPET DETAIL

A2 3" = 1'-0" ADMINISTRATION (LOW)

NOTE:

- PROVIDE SHORT OR SEGMENTED WOOD BLOCKING AND SHEET METAL AT RADIUS CONDITION, KIRF PLYWOOD AS NEEDED



5 WALL DETAIL

A2 3" = 1'-0" ADMINISTRATION (LOW)

Consultants:

Signature: _____

Issues and revisions:

ISSUE LEVEL / REVISION:	DATE:	No.:
90% REVIEW	3/14/2019	
95% REVIEW	3/22/2019	

Client:

DULUTH TRANSIT
AUTHORITY

Project title:

2019 PARTIAL REROOFING OPERATIONS CENTER

2402 W MICHIGAN ST.
DULUTH, MN 55806

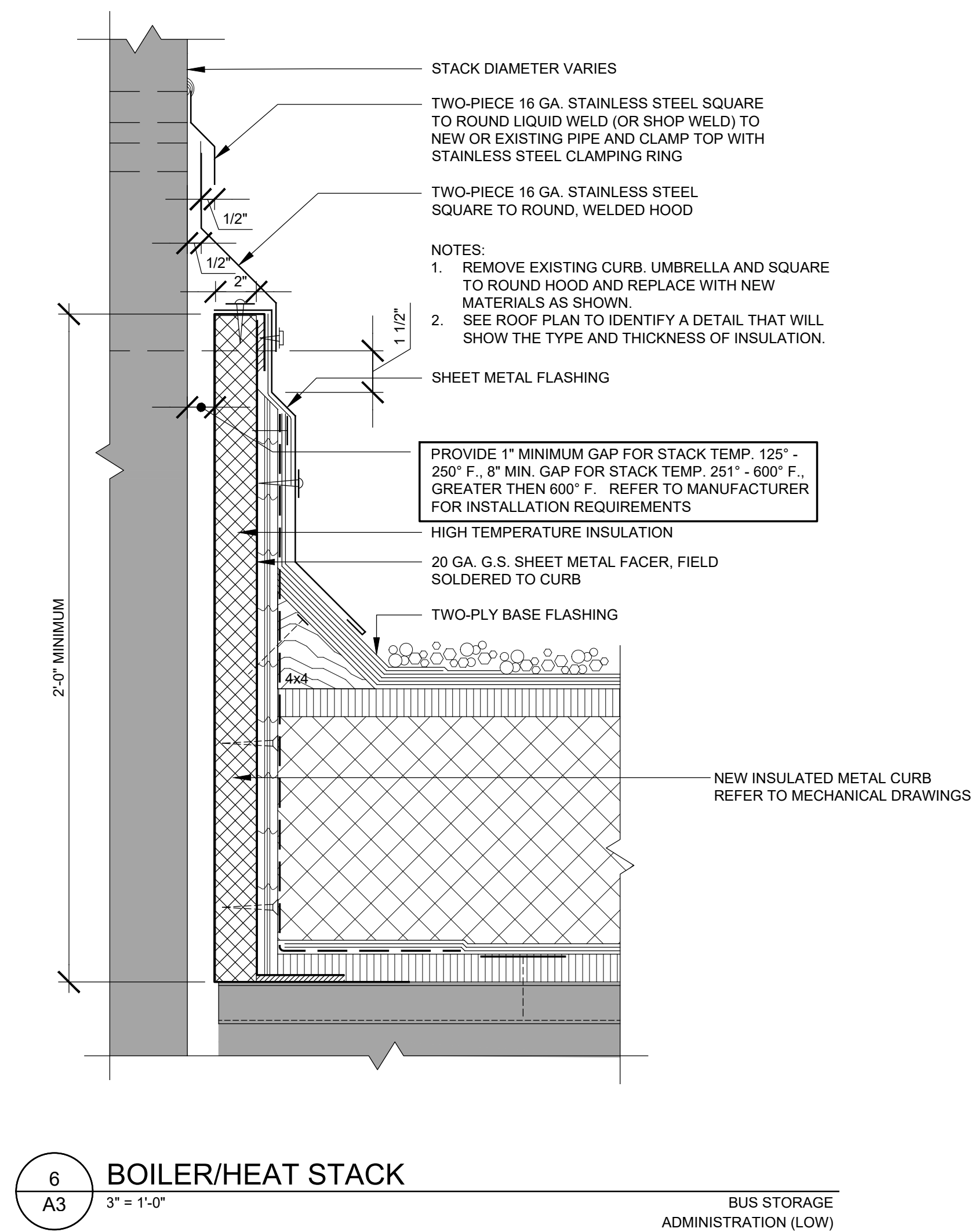
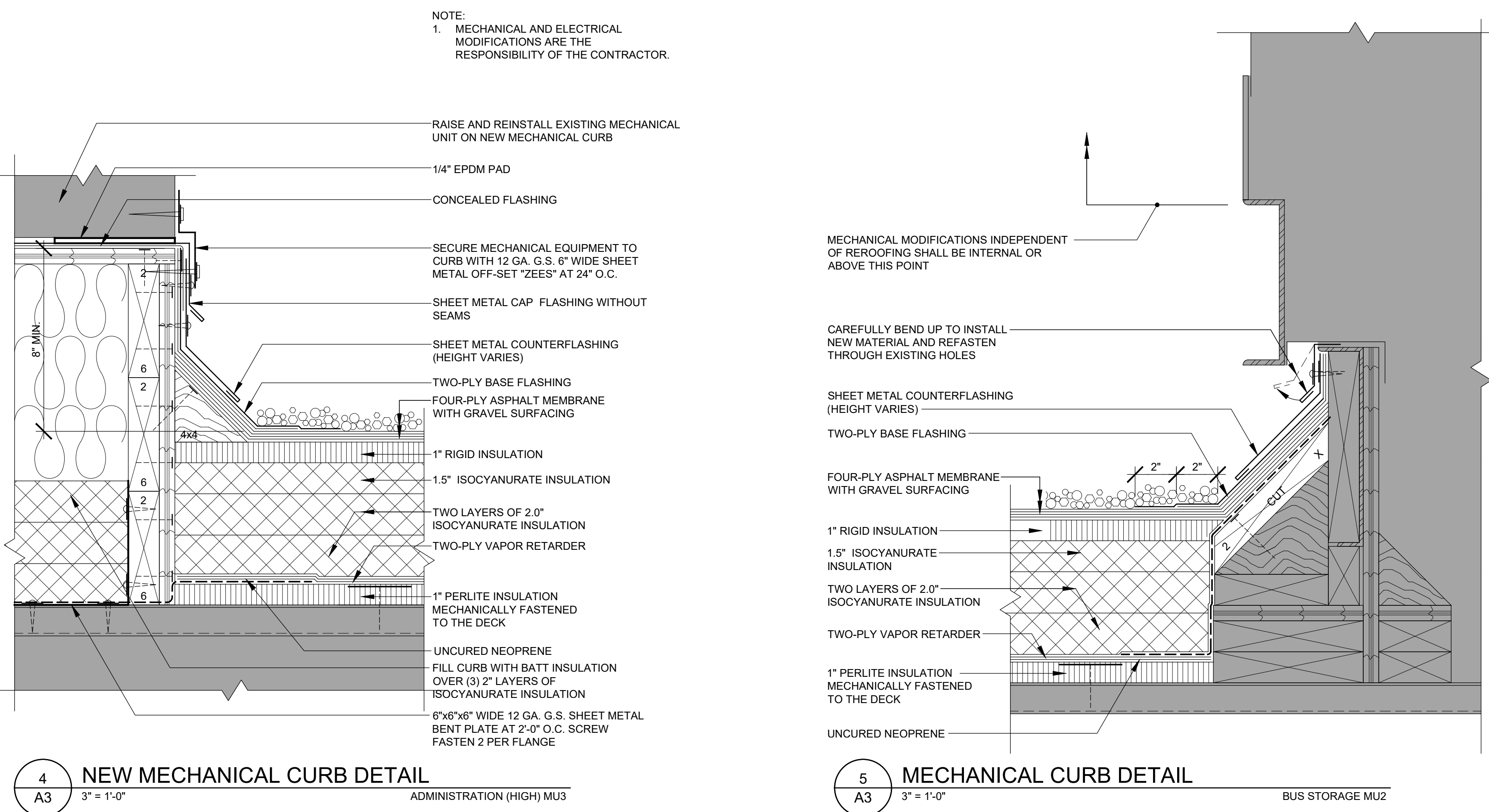
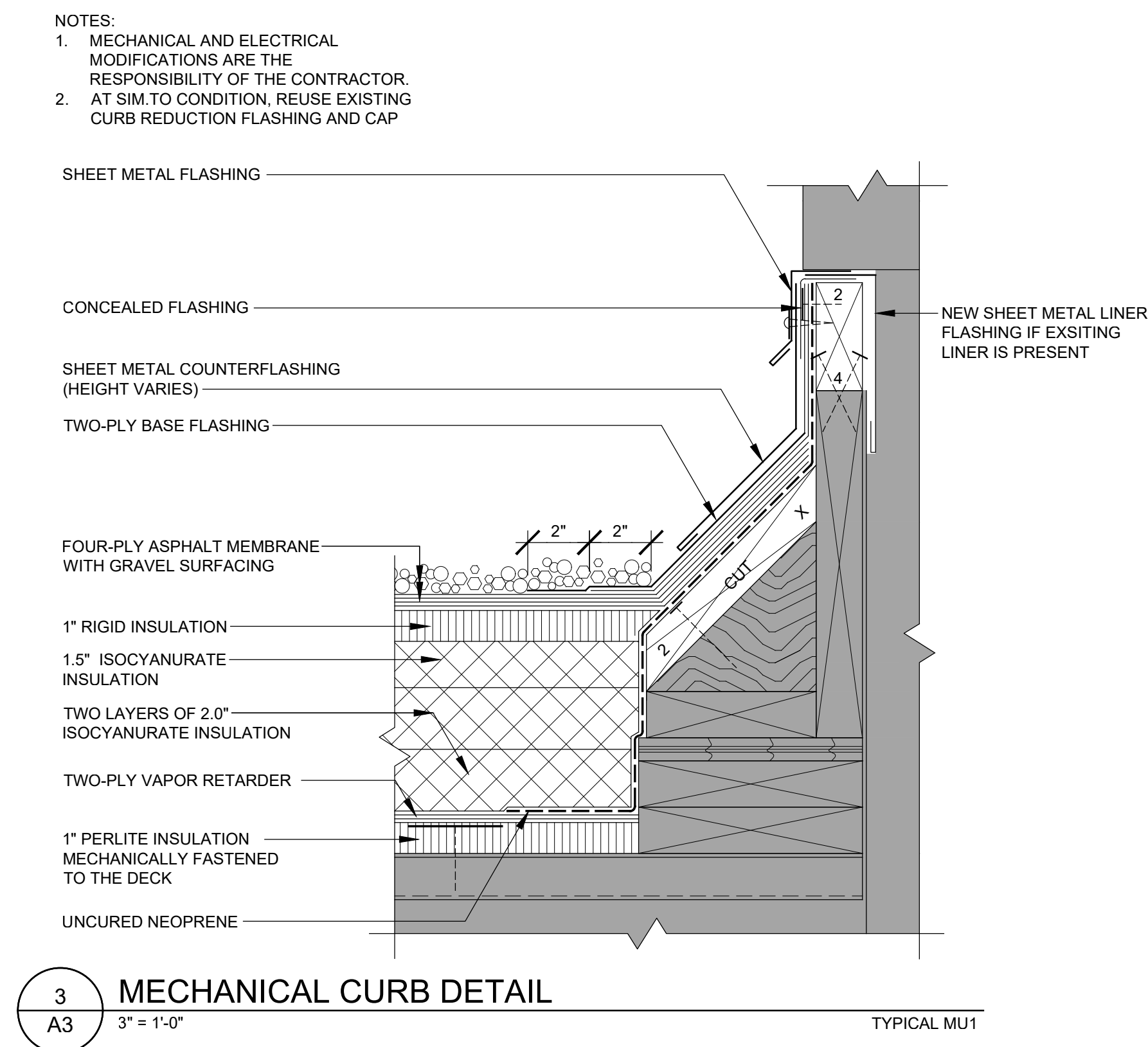
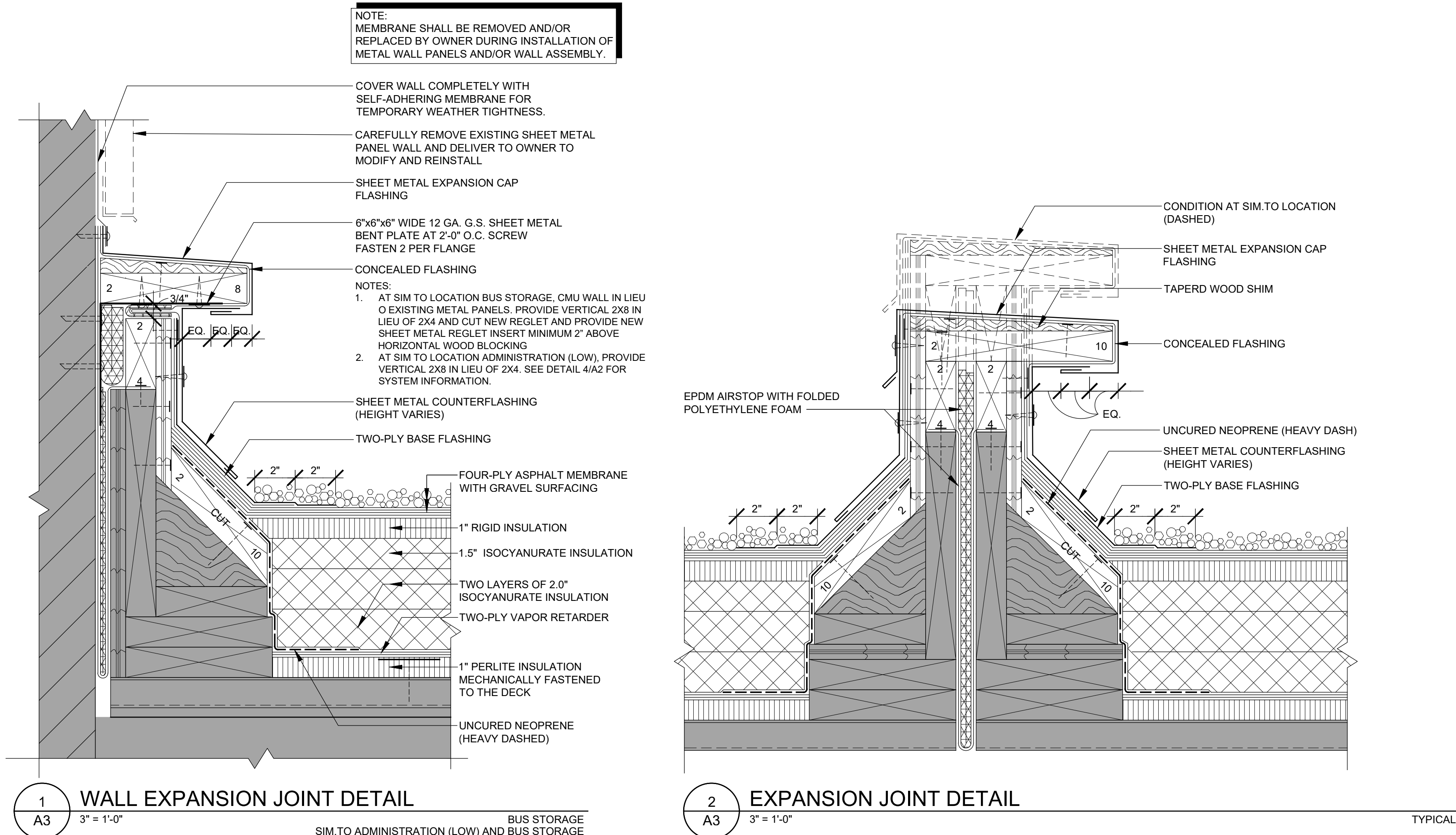
Sheet content:

ROOFING DETAILS

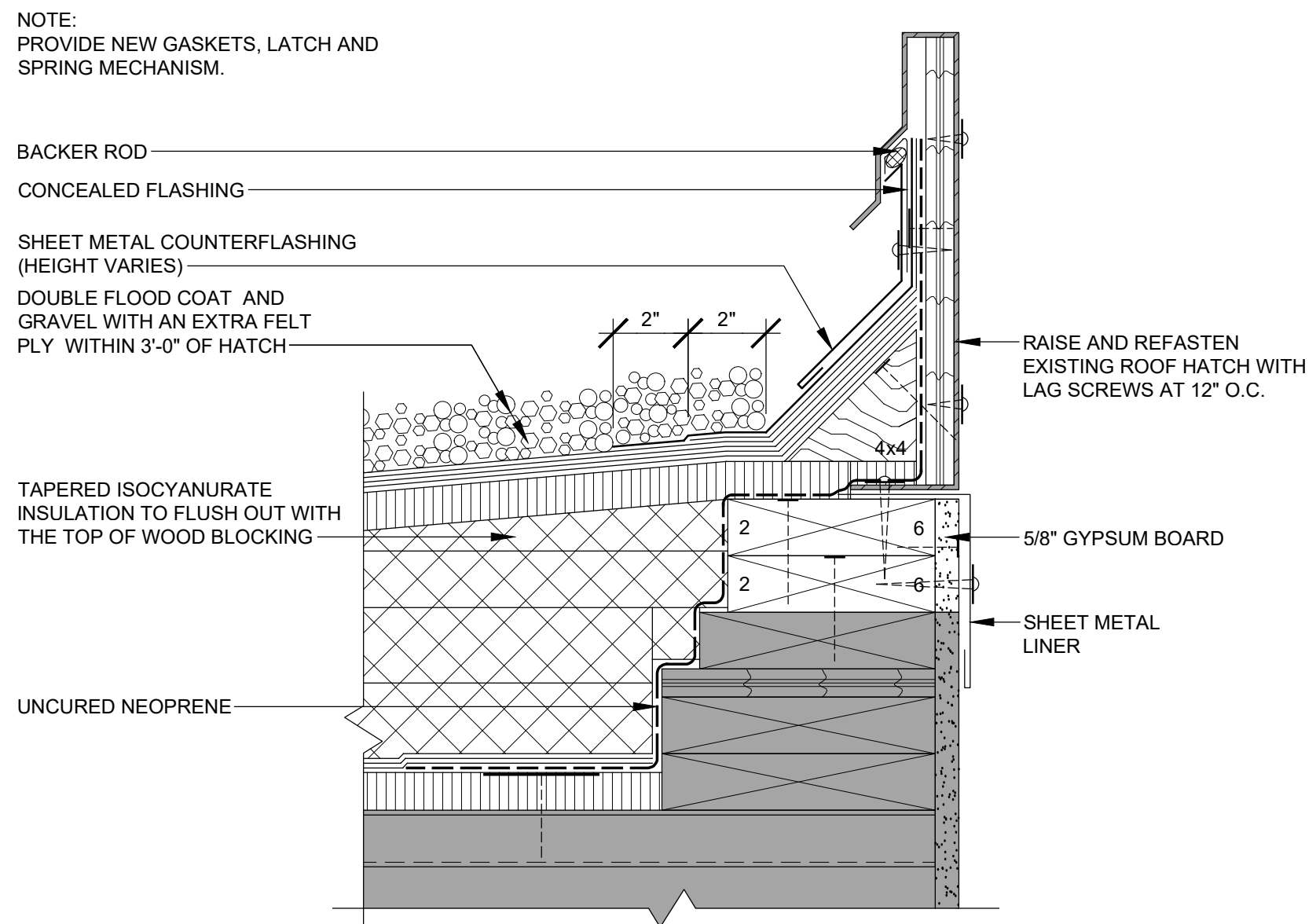
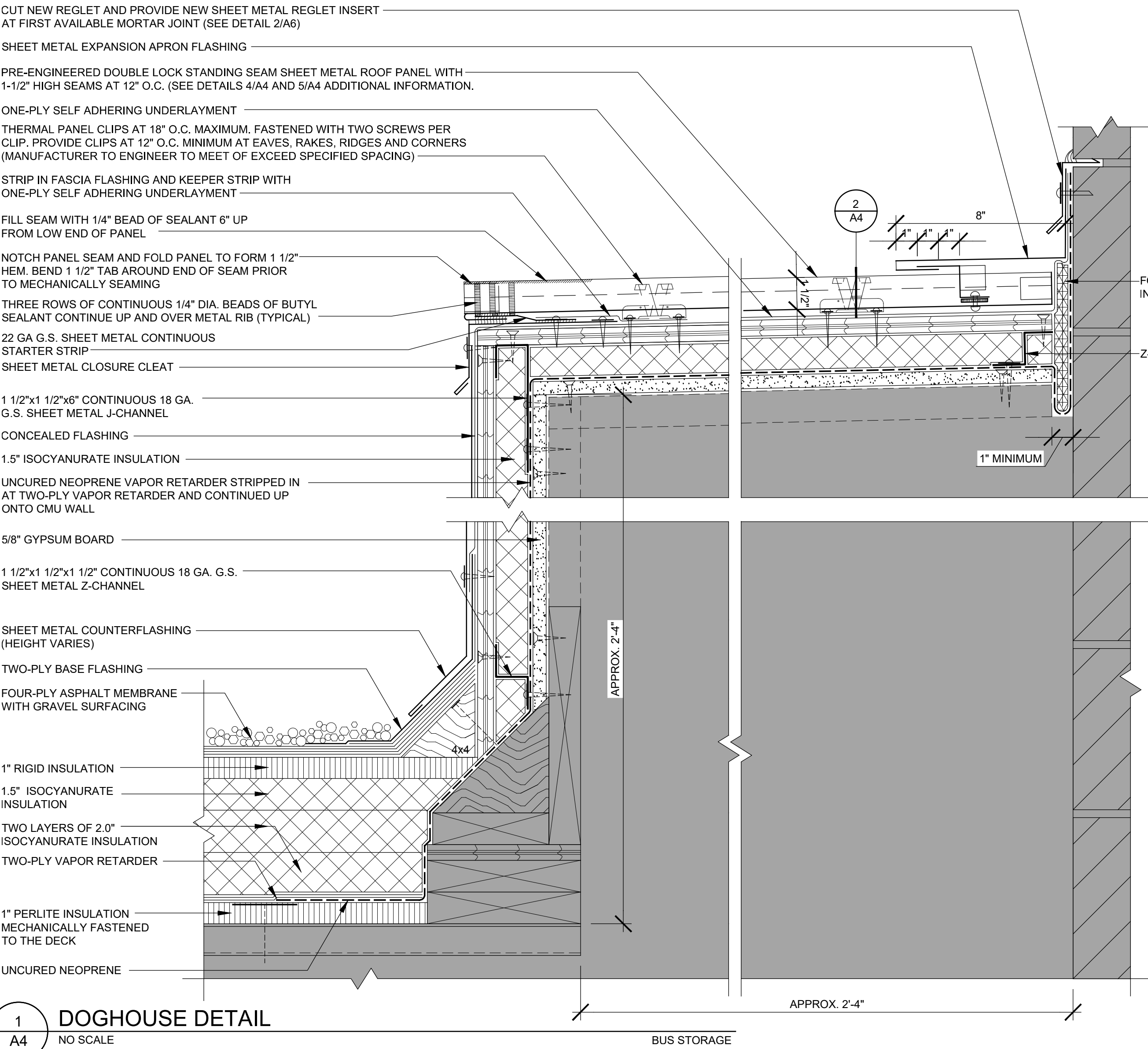
DATE: 3/14/2019
CLIENT PROJECT No.: .
INSPEC PROJECT No.: 214706.1
PROJECT MGR: DM
DRAWN BY: RJM
CHECKED BY: DM

Sheet No.:

A3



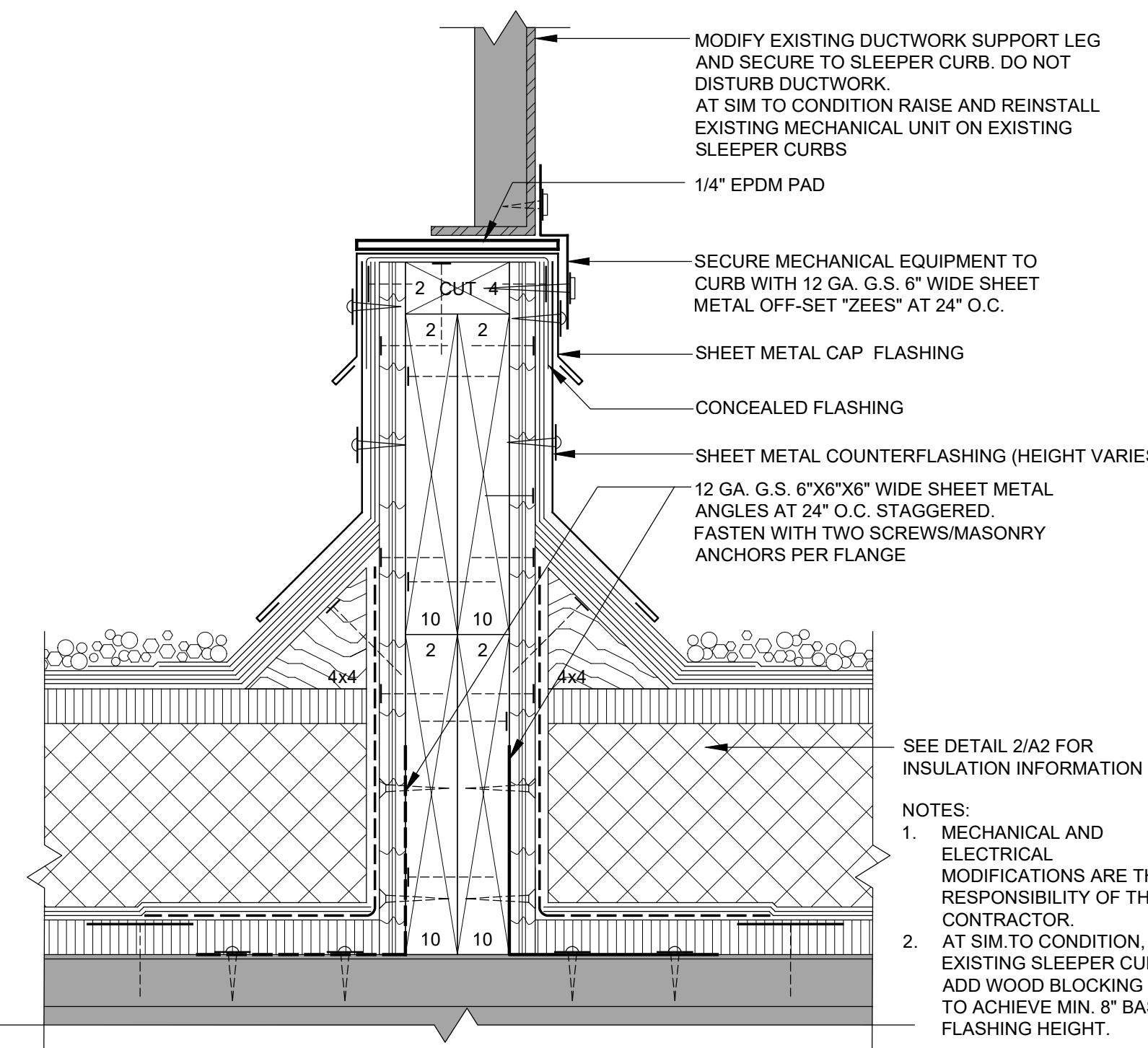
3/22/2019 12:07 PIRYAN.MCLINN \\HUL\\kroding\\Drawing Files\\Public\\Cities\\City of Duluth\\Duluth Transit Authority\\2019 DTA Operations Center\\5.0\\inspec\\0-Current - use this one instead\\1214706 Plan.dwg



6
A4

ROOF HATCH DETAIL
3" = 1'-0"

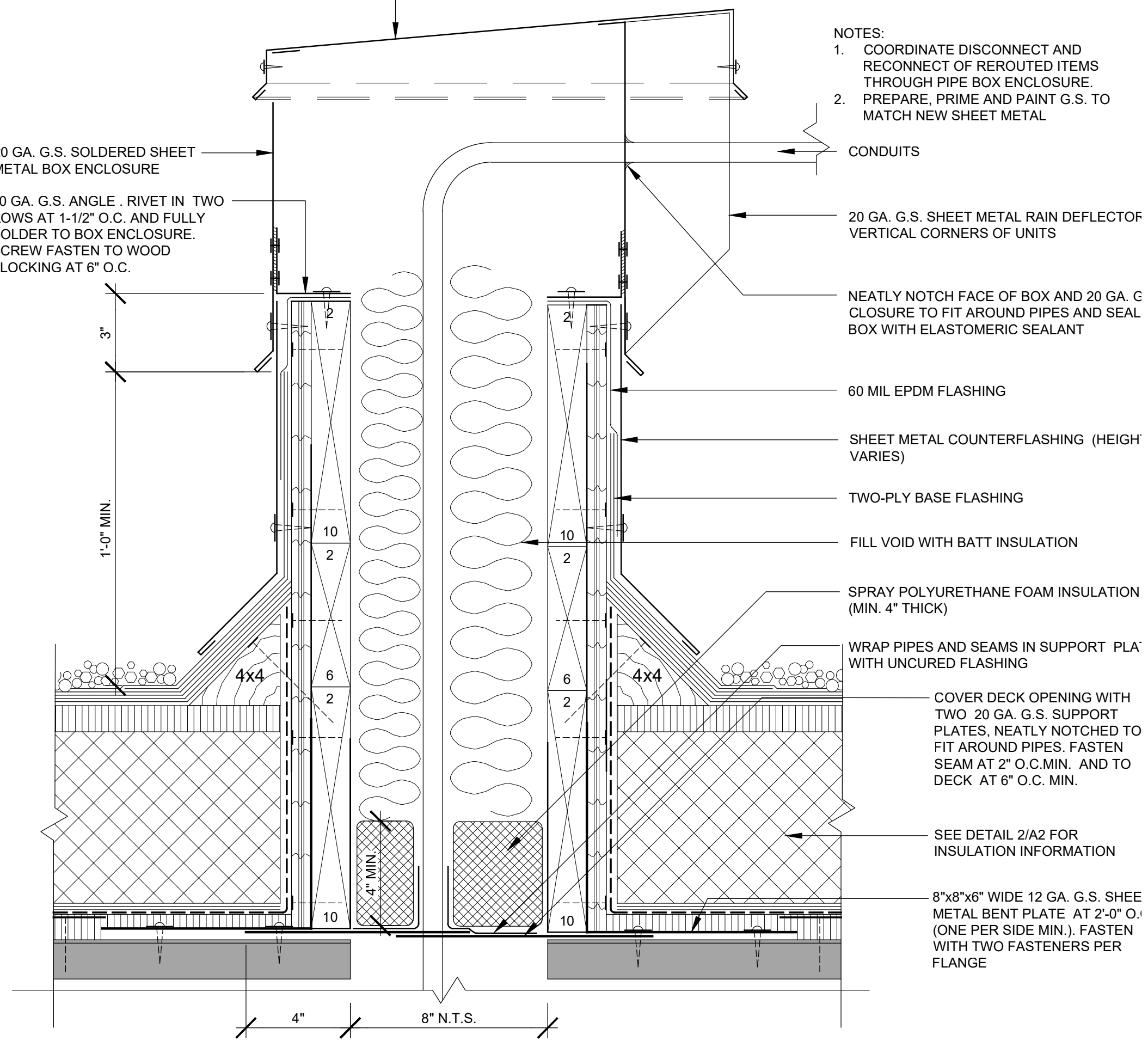
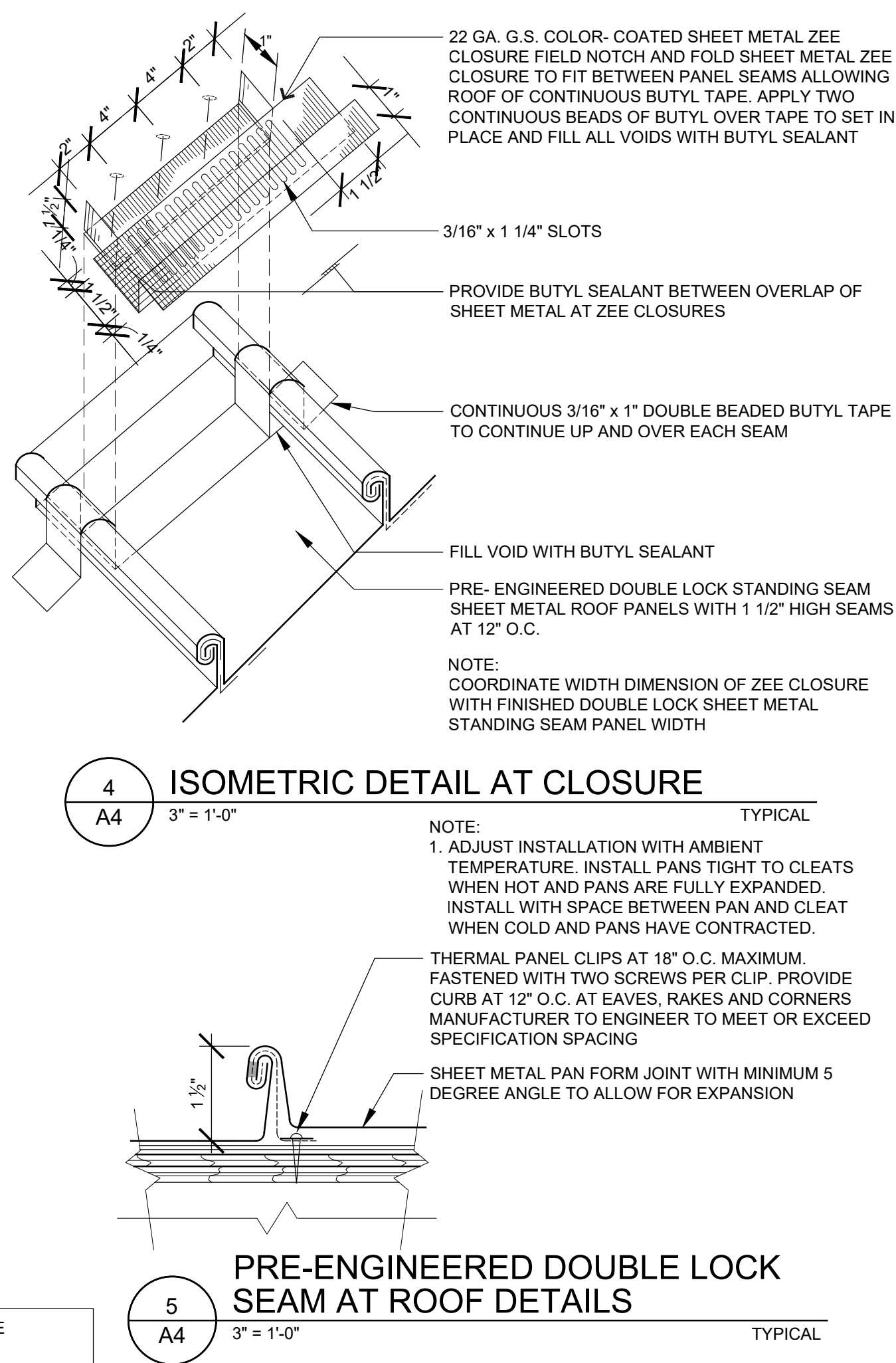
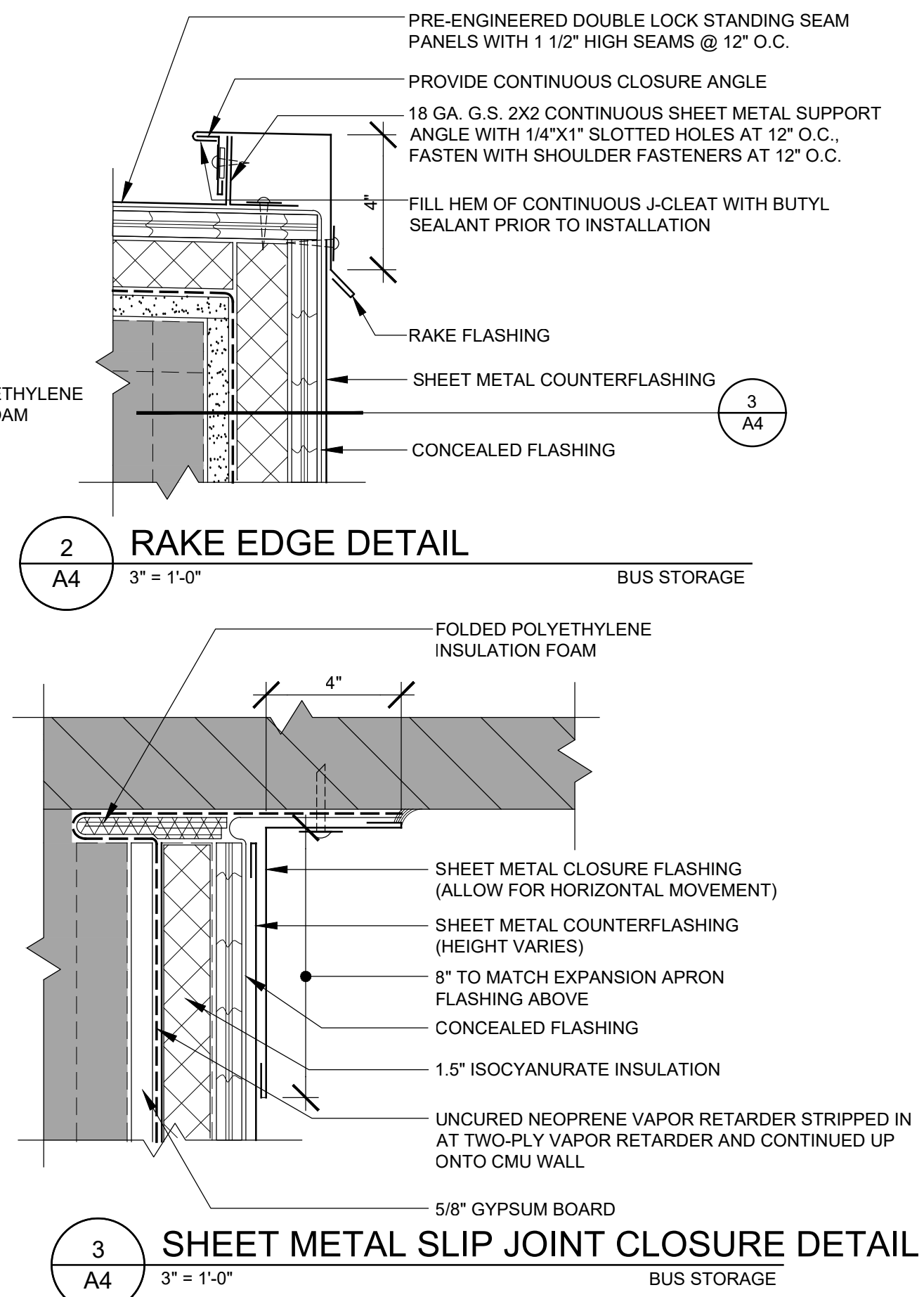
BUS STORAGE



7
A4

SLEEPER CURB DETAIL
3" = 1'-0"

ADMINISTRATION (HIGH)



8
A4

PIPE BOX ENCLOSURE DETAIL
NO SCALE

ADMINISTRATION (HIGH)

Signature:

Issues and revisions.		
ISSUE LEVEL / REVISION:	DATE:	No.:
90% REVIEW	3/14/2019	
95% REVIEW	3/22/2019	

Client:

DULUTH TRANSIT AUTHORITY

Project title:

2019 PARTIAL REROOFING OPERATIONS CENTER

2402 W MICHIGAN ST.
DULUTH, MN 55806

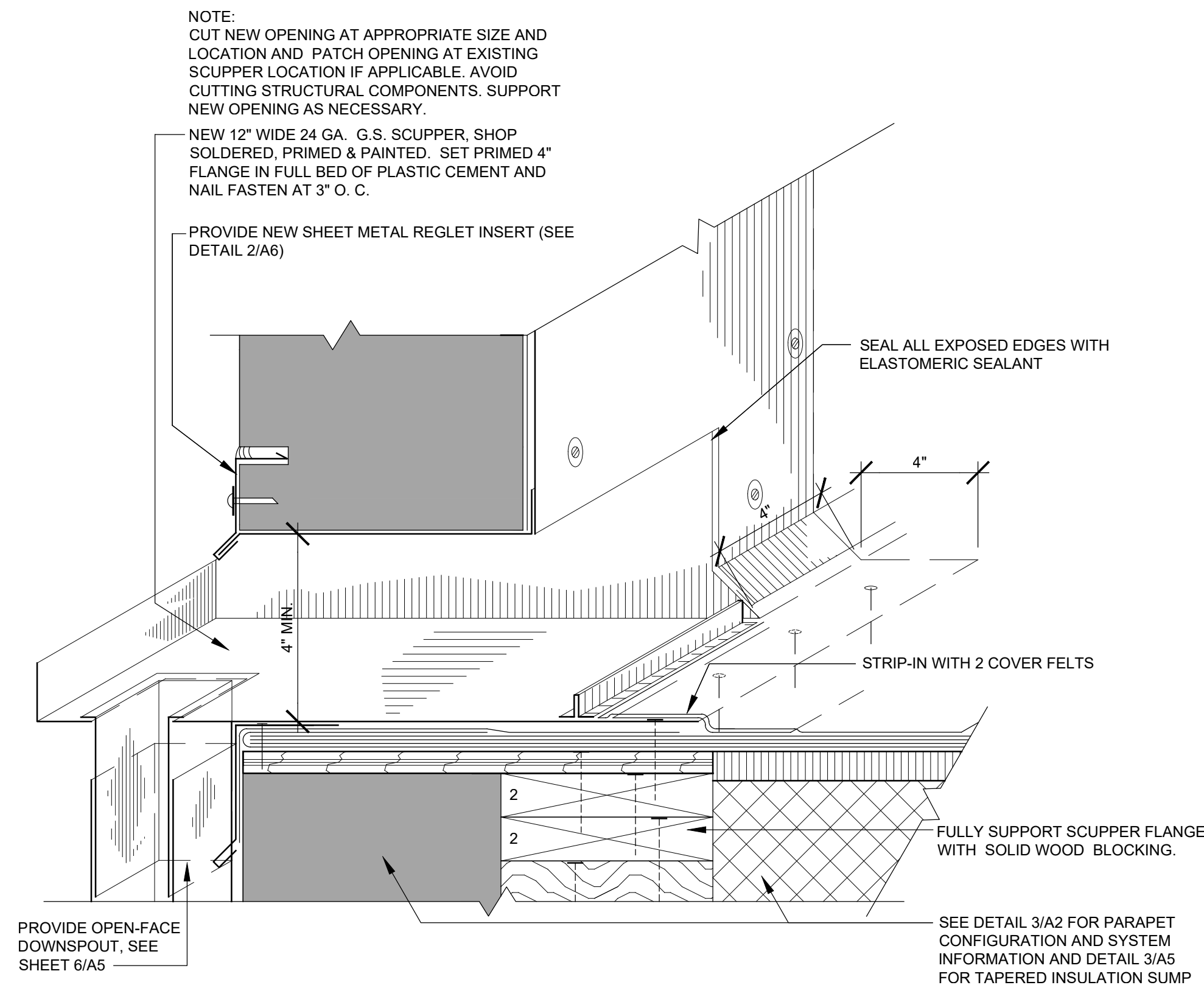
Sheet content:

ROOFING DETAILS

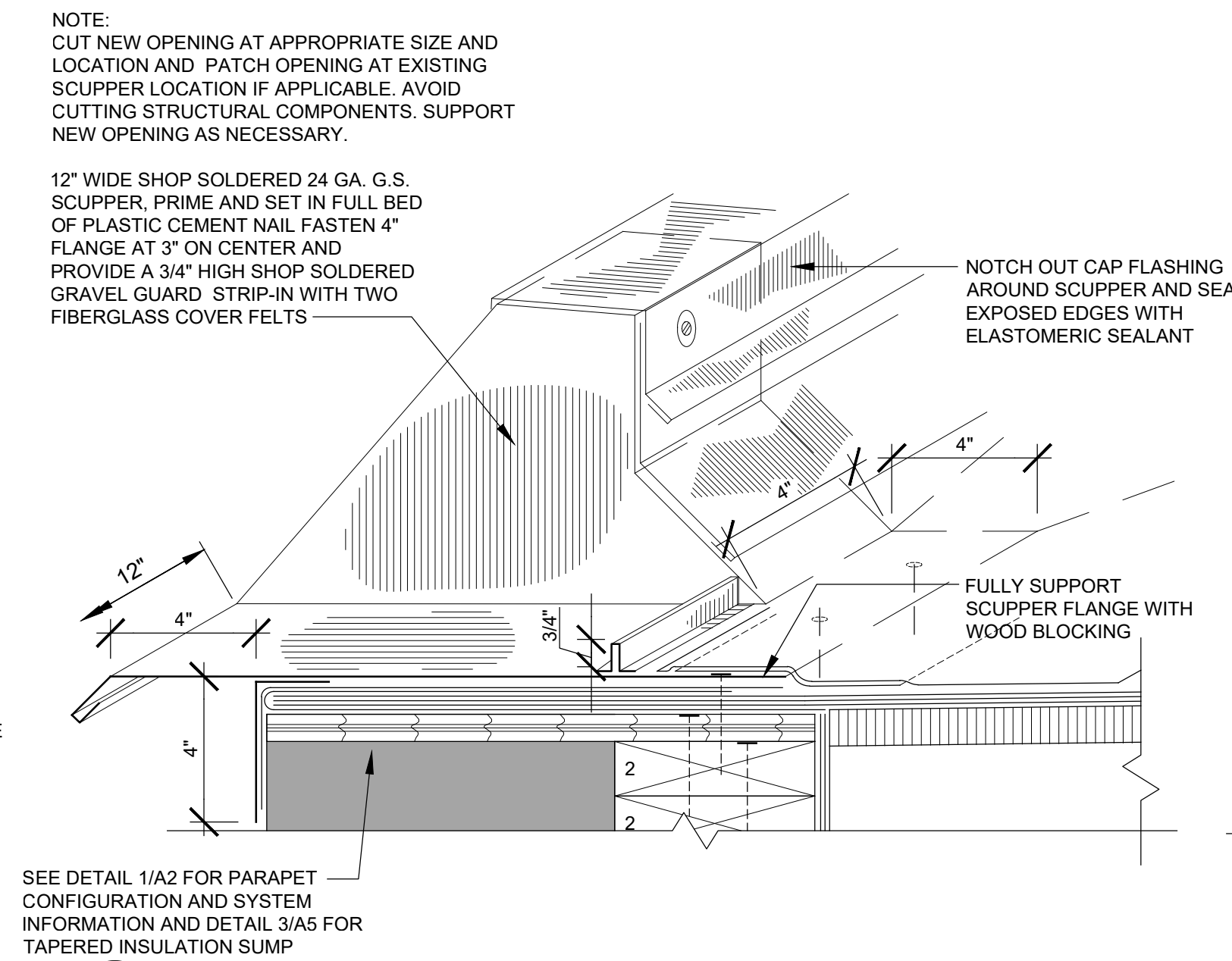
DATE: 3/14/2019
CLIENT PROJECT No.:
INSPEC PROJECT No.: 214706.1
PROJECT MGR: DM
DRAWN BY: RJM
CHECKED BY: DM

Sheet No.:

Consultants:



1 THRU-PARAPET PRIMARY SCUPPER DETAIL
A5 NO SCALE ADMINISTRATION (HIGH)

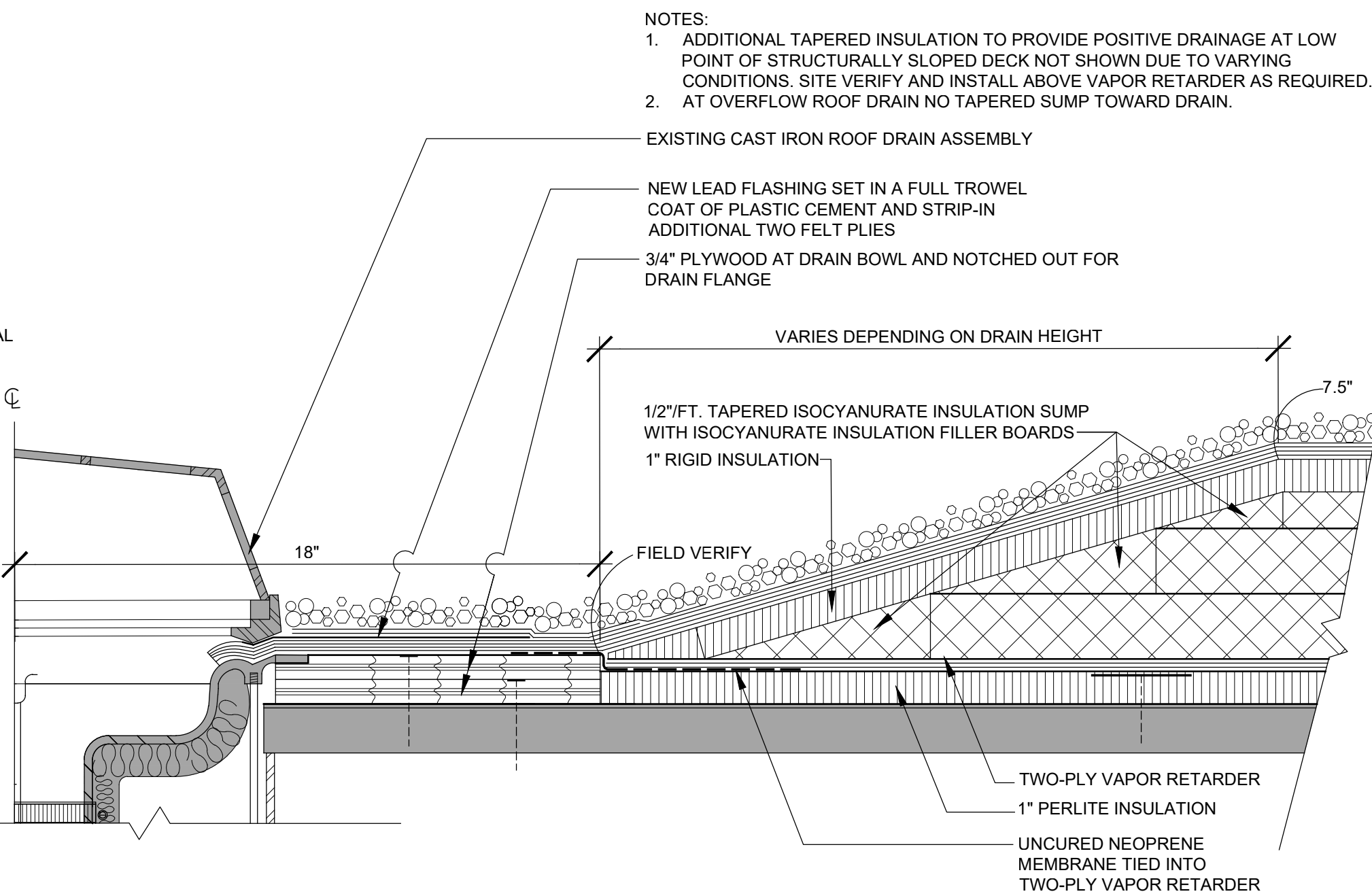


2

A5

PRIMARY FREE-FALL SCUPPER DETAIL

NO SCALE
ADMINISTRATION (HIGH)



3
A5 TAPERED INSULATION SUMP AND
EXISTING ROOF DRAIN ASSEMBLY DETAIL
NO SCALE TYPICAL

Signature

Issues and revisions

ISSUE LEVEL / REVISION:	DATE:	No.:
90% REVIEW	3/14/2019	
95% REVIEW	3/22/2019	

Client:

DULUTH TRANSIT
AUTHORITY

Project title:

2019 PARTIAL REROOFING OPERATIONS CENTER

2402 W MICHIGAN ST.
DULUTH, MN 55806

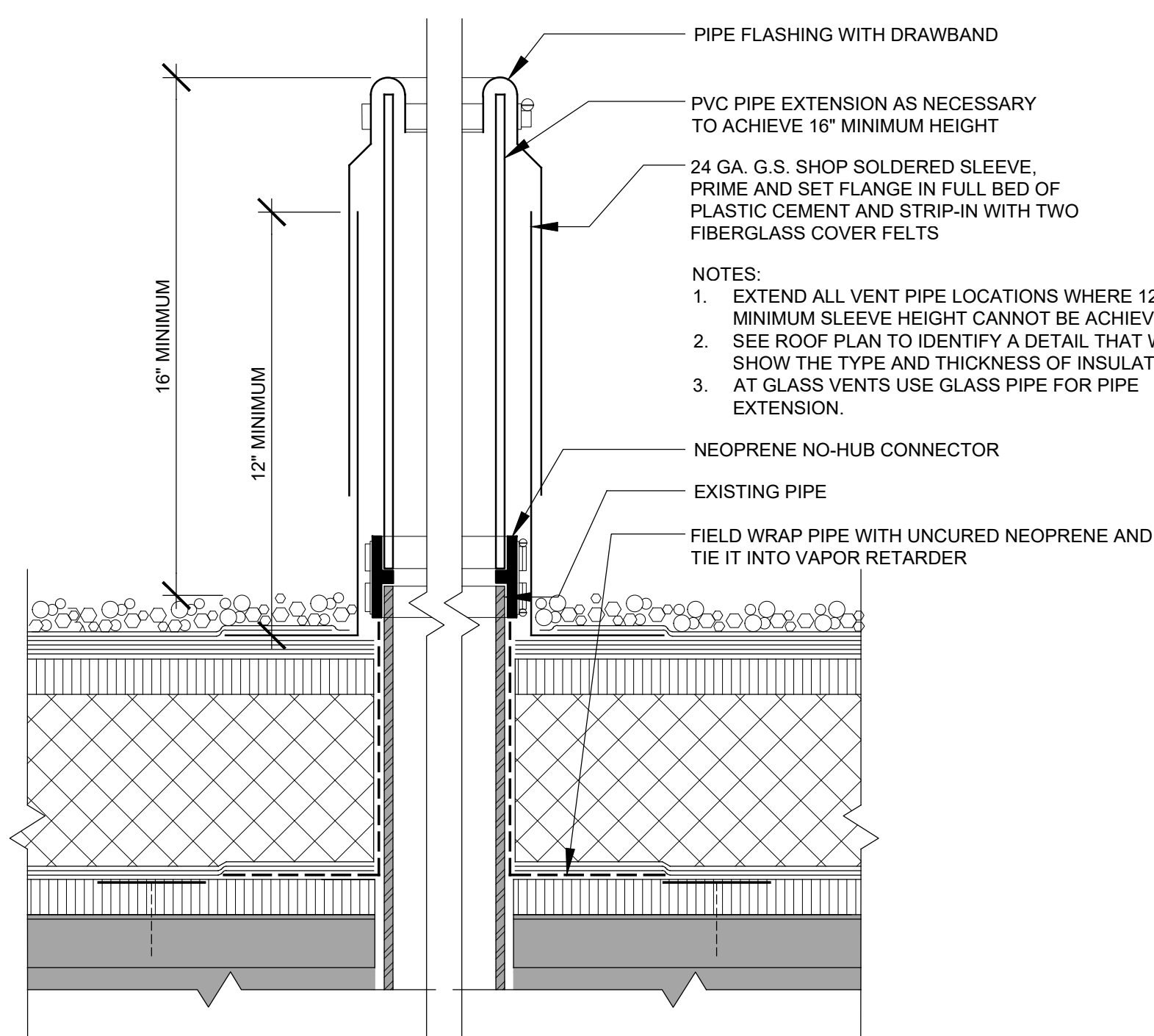
Sheet content:

ROOFING DETAILS

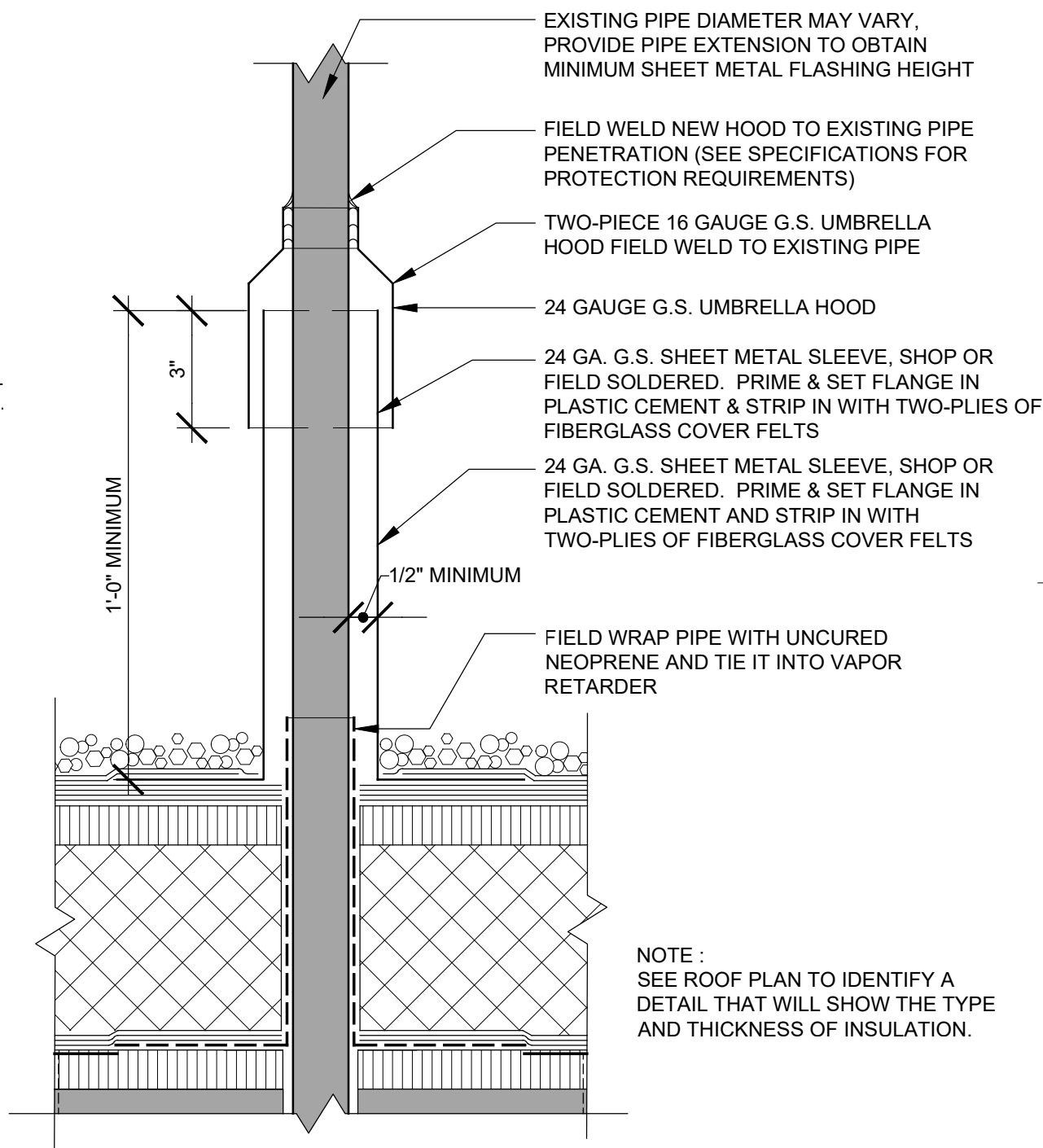
DATE: 3/14/2019
CLIENT PROJECT No.: .
INSPEC PROJECT No.: 214706.1
PROJECT MGR: DM
DRAWN BY: RJM
CHECKED BY: DM

Sheet No.:

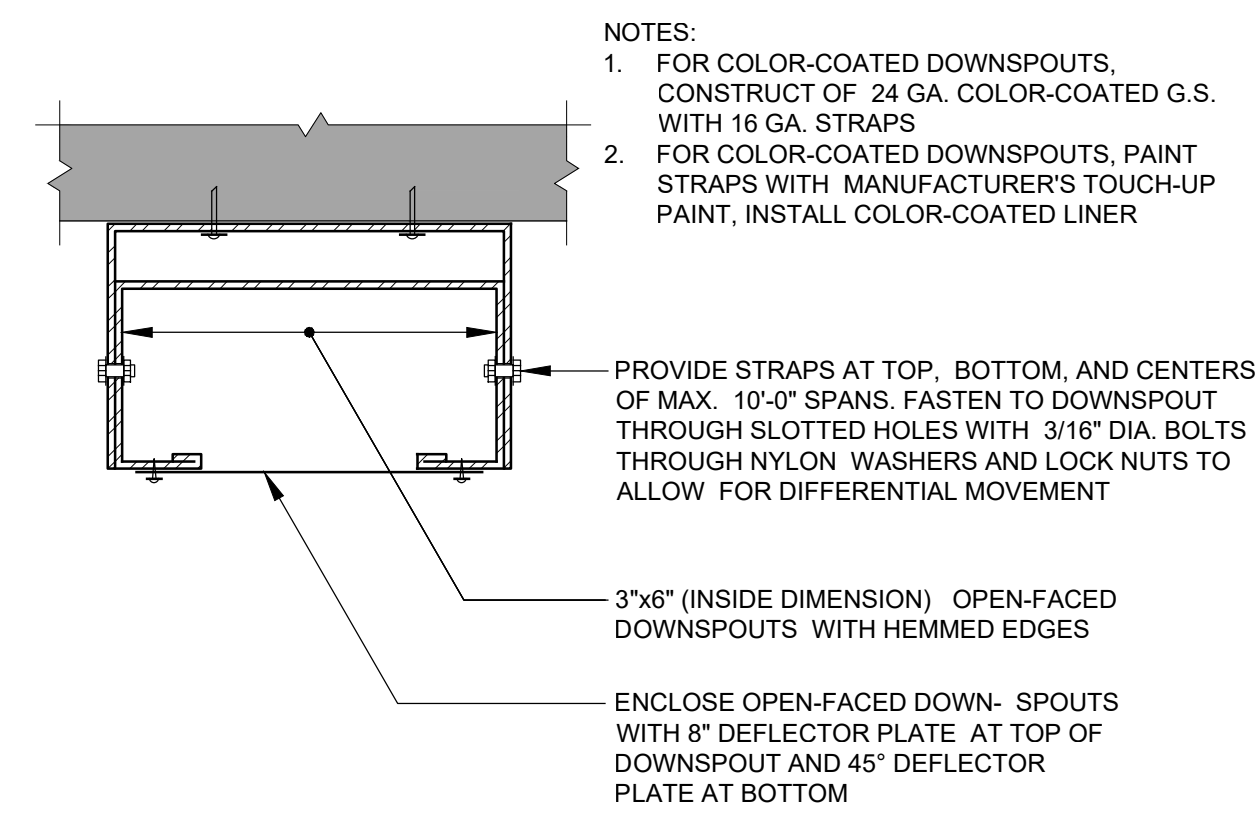
A5



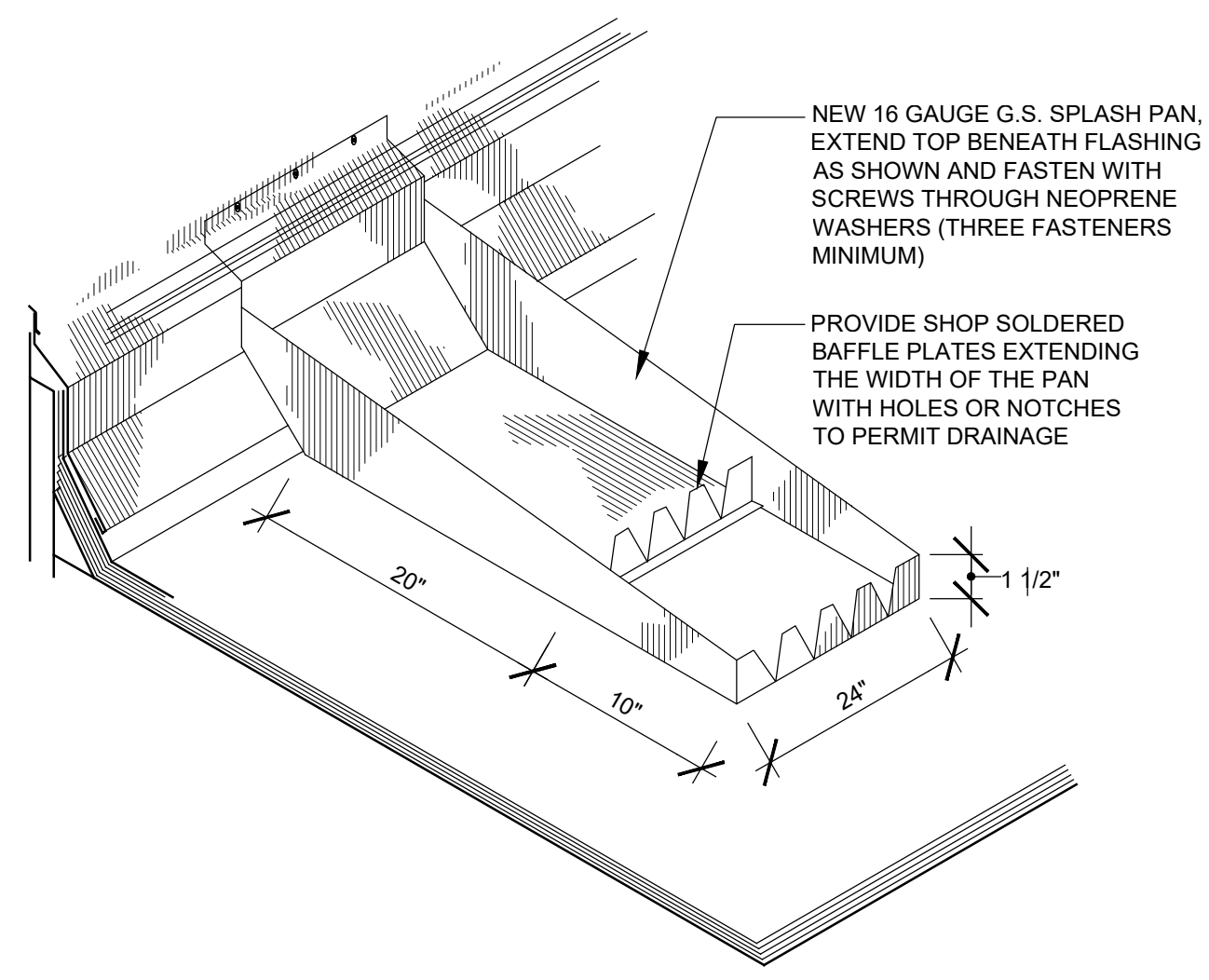
4 TYPICAL VENT STACK DETAIL
A5 NO SCALE TYPICAL



5 PIPE PENETRATION DETAIL
A5 NO SCALE TYPICAL



6 DOWNSPOUT DETAIL
A5 NO SCALE ADMINISTRATION (HIGH)



7 SPLASH PAN DETAIL
A5 NO SCALE TYPICAL

3/22/2019 12:07 PMRYAN.MCLINN\\HUL\\Roofing\\Drawing Files\\Public\\Cities\\City of Duluth\\Duluth Transit Authority\\2019 DTA Operations Center\\5.0-Inspect\\0-Current - use this one instead\\1214706 Plan.dwg



5801 Duluth Street
Minneapolis, MN
55422
Ph. 763-546-3434

© 2019

Consultants:

Signature:

Issues and revisions.

ISSUE LEVEL / REVISION:	DATE:	No.:
90% REVIEW	3/14/2019	
95% REVIEW	3/22/2019	

Client:

DULUTH TRANSIT AUTHORITY

Project title:

2019 PARTIAL REROOFING OPERATIONS CENTER

2402 W MICHIGAN ST.
DULUTH, MN 55806

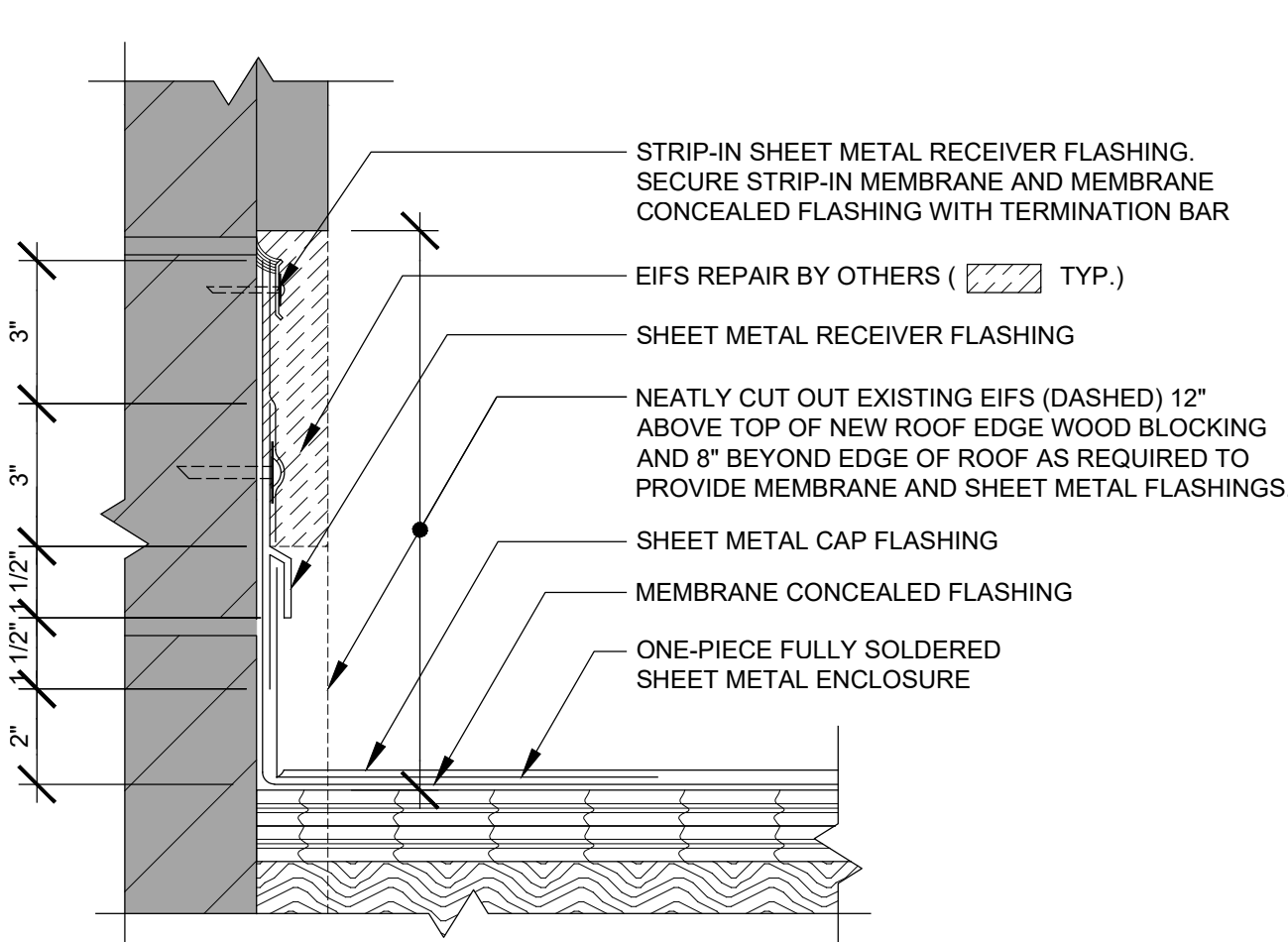
Sheet content:

ROOFING DETAILS

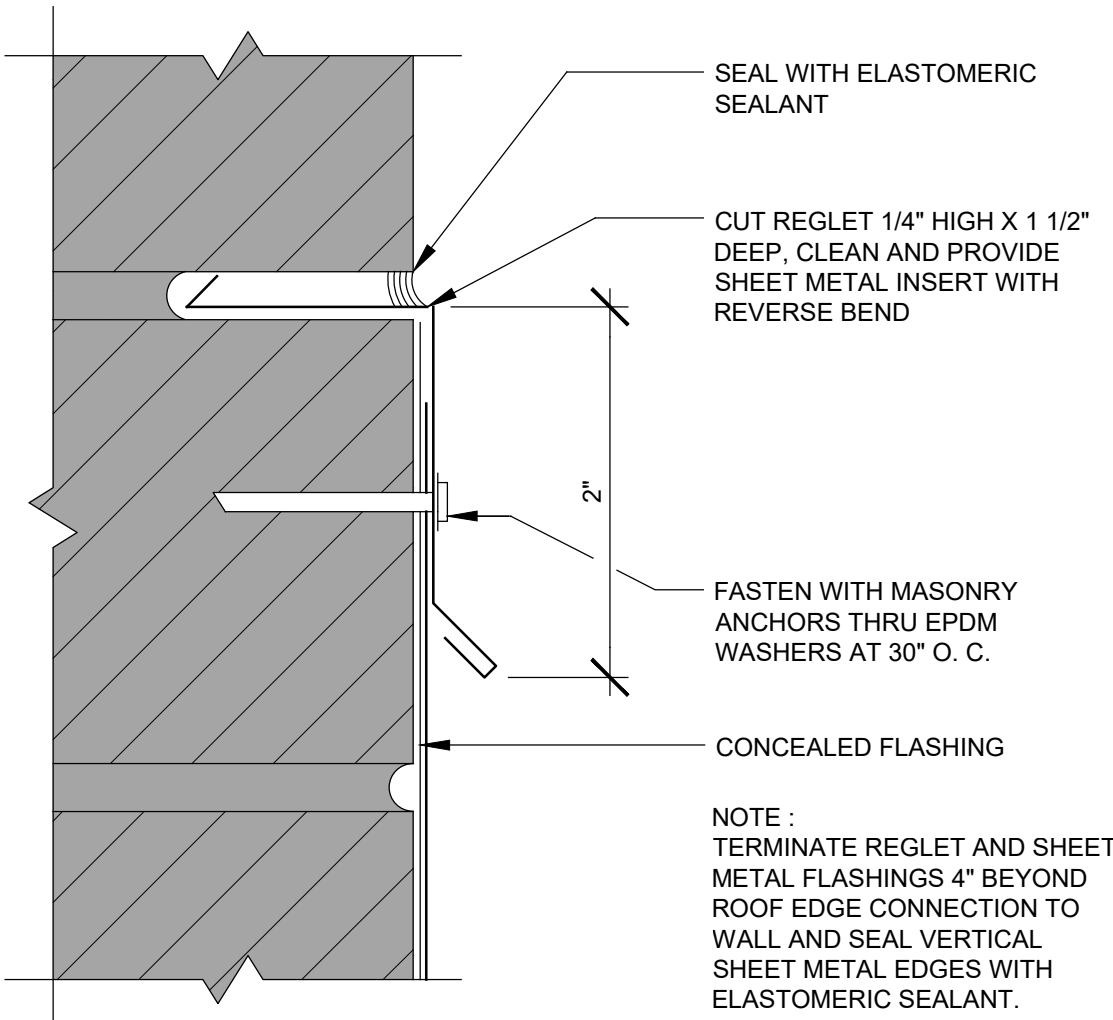
DATE: 3/14/2019
CLIENT PROJECT No.: .
INSPEC PROJECT No.: 214706.1
PROJECT MGR: DM
DRAWN BY: RJM
CHECKED BY: DM

Sheet No.:

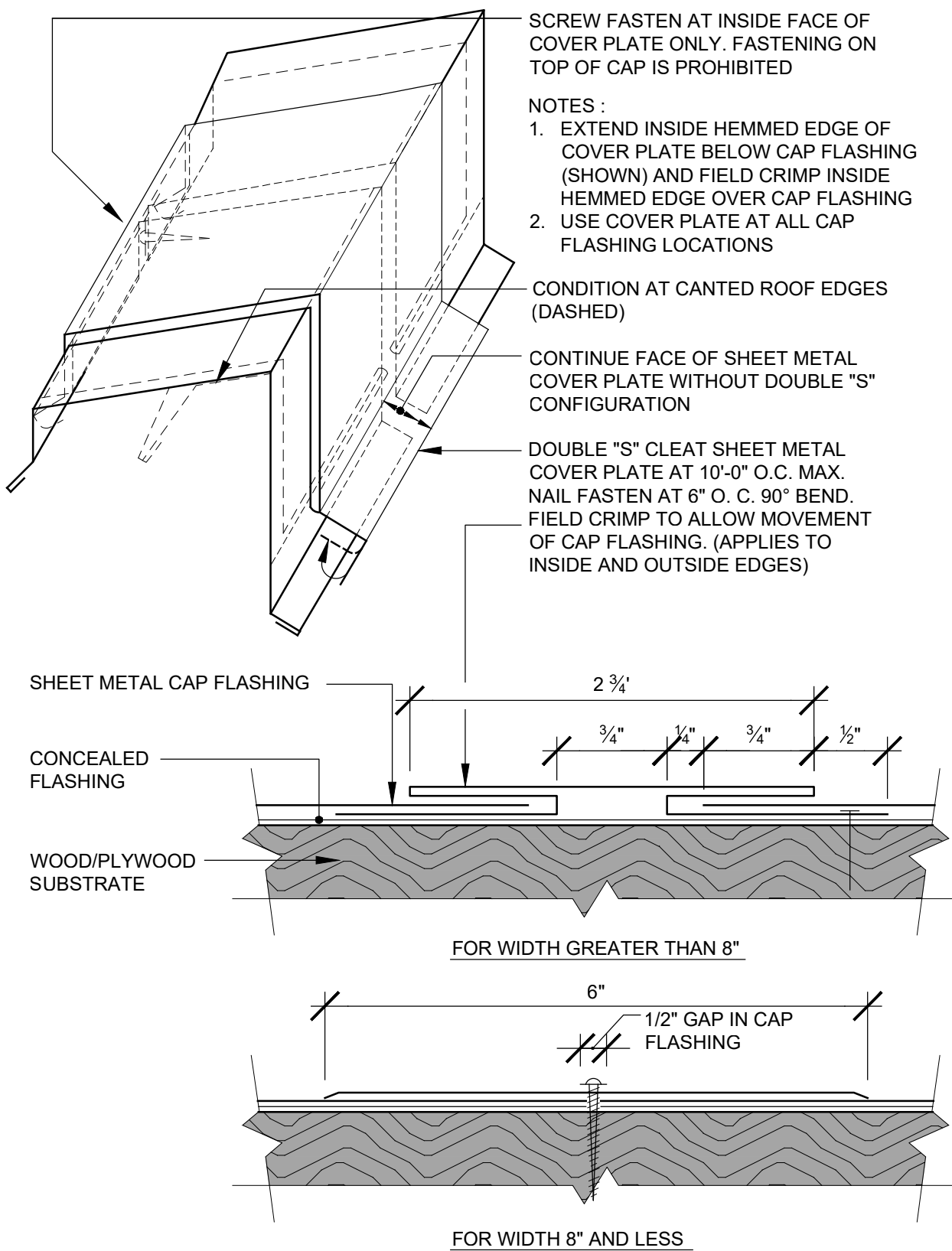
A6



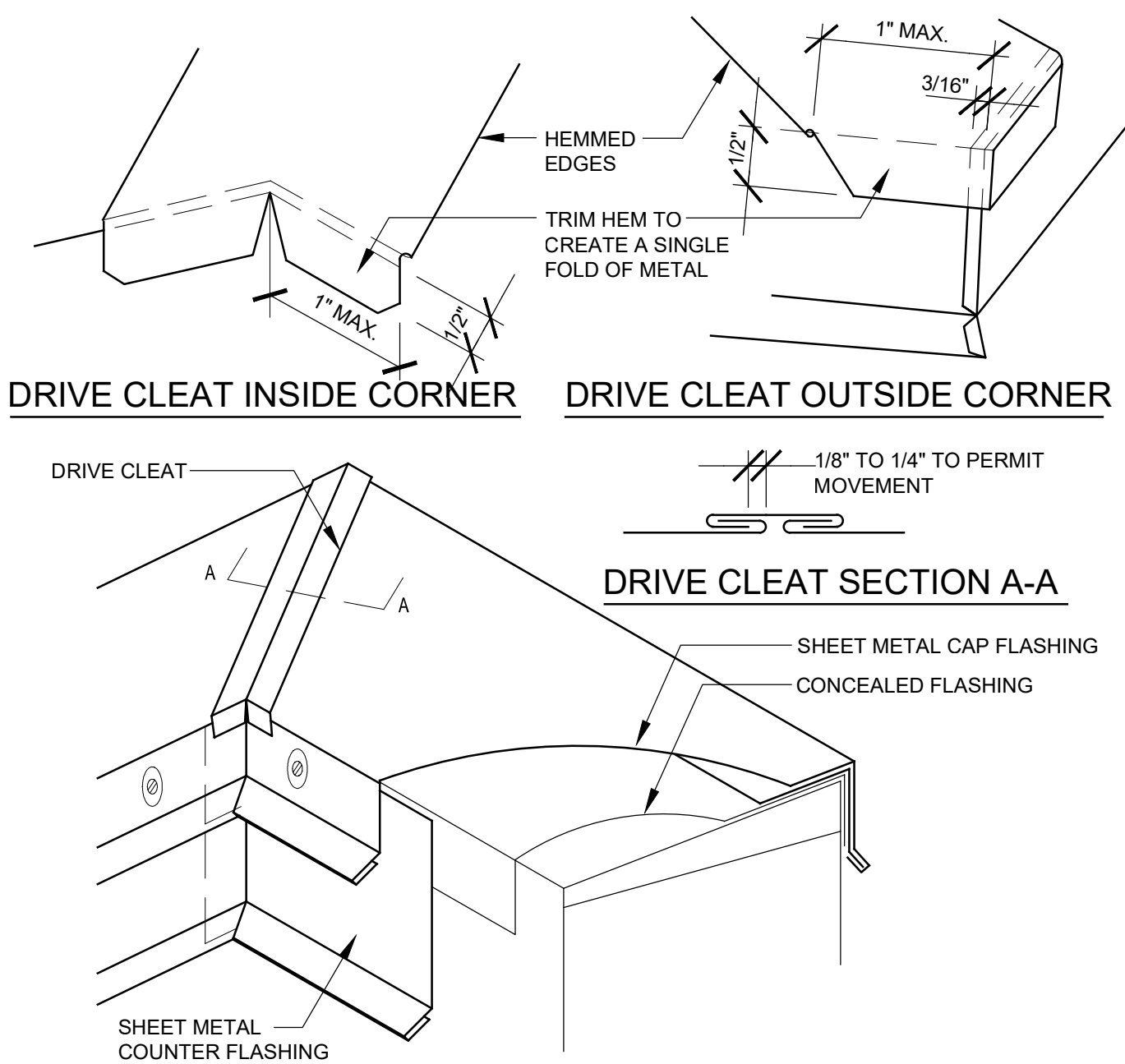
1 RECEIVER FLASHING AT EIFS
A6 3"=1'-0" TYPICAL



2 REGLET INSERT DETAIL
A6 3"=1'-0" TYPICAL



3 COVER PLATE DETAILS
A6 NO SCALE TYPICAL



4 ROOF EDGE CORNER DRIVE CLEAT-ISOMETRIC
A6 3"=1'-0" TYPICAL